



**How does Sweden work? p 2**

**How to get to and from the airport p 3**

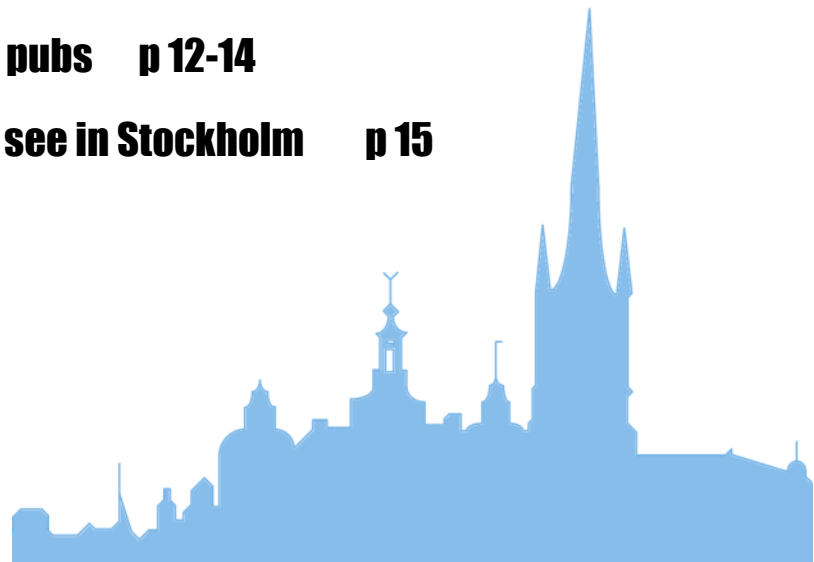
**Using the subway p 4**

**Using bus and taxi p 5**

**Going from hotels to the venue p 6-11**

**Nice bars and pubs p 12-14**

**Things to see in Stockholm p 15**



# Visitors' Guide

# How Does Sweden Work?

## Language

The native language is Swedish, a language closely related to Norwegian and Danish. But **almost all Swedes know English** so you should be fine.

## Currency

The national currency is **Swedish crowns (SEK)**, **not Euros** as you might think. Approximate exchange rates:

1 US Dollar	8 SEK
1 Euro	10 SEK
1 DKK	1.35 SEK
1 NOK	1.25 SEK

## Tipping, haggling, VAT

Service charge is always included at restaurants but you typically **tip 10 % if food and service was good**. You rarely tip hotel staff or taxi drivers.

Swedes **never haggle** prices. We're too shy for that :).

**Value Added Tax is included in the sales price** on the tag. If you reside outside the European Union (EU), you are entitled to a tax refund on your purchases. Tax Free Shopping by Global Refund is a simple system that puts cash in your hand when you leave the EU. You get refunds of up to 17,5% on your purchases. The minimum purchase is 200 SEK. Read more at [www.globalrefund.com](http://www.globalrefund.com).

## Friday June 25 is Midsummer's Eve

Now this is crucial when it comes to Swedes — Friday June 25, i.e. right after the conference, is Midsummer's Eve. Swedes go into the countryside and celebrate. This means large parts of Stockholm will be a ghost town, several restaurants will be closed, and prices on taxis etc are higher.

If you're planning on spending Midsummer's Eve in Stockholm **we advice you to go to Skansen**. They have traditional celebration all day and are a very popular place among visitors in general. Check out [www.skansen.se](http://www.skansen.se).

# To and From the Airport

## Taxi / Cab

Taxis are quite expensive in Sweden. To and from Arlanda Airport you often get a fixed price— for instance **495 SEK to the city center**. Otherwise you always go by meter. These taxi companies are reliable:

Taxi Stockholm      +46-8-15 00 00      (495 SEK to city center)

Taxi Kurir            +46-8-30 00 00      (490 SEK to city center)

Taxi 020             +46-20-20 20 20      (490 SEK to city center)

## Arlanda Express (speed train)

The fastest and most convenient way to get to and from the airport is via the speed trains *Arlanda Express*. They take you **between Arlanda and Stockholm Central in 20 minutes**. You purchase tickets with credit card in **large yellow ticket machines** at the airport or the Central Station. The prices are:

Single ticket            240 SEK (student 120 SEK)

Return ticket            460 SEK (student 240 SEK)

## Flygbussarna (coaches)

The cheapest way to get to and from the airport is via coach/bus *Flygbussarna*. They take you **between Arlanda and Stockholm Central in 40 minutes**. You purchase tickets with credit card in ticket machines at the airport or the Central Station. You can also buy tickets onboard the coaches (not cash, credit card only). The prices are:

Single ticket            119 SEK (25 years or younger 89 SEK)

Return ticket            219 SEK (25 years or younger 159 SEK)

## The Final Stretch To the Hotel/Hostel

Taxis will take you directly to the hotel of course.

The speed trains always arrive at the Central Station and if you go by coach we advice you to go all the way to the central station. Taxis are waiting just outside. If you prefer public transportation you walk through a tunnel towards *T-centralen* (central subway station), get your 3 day or 7 day ticket (see "How To Get Around In Stockholm") at the *SL-center* (central ticket sales) and go to the subway station closest to your accommodation:

Best Western Time Hotel: Green line to *Odenplan*

Fridhemsplan's Hostel: Green line to *Fridhemsplan*



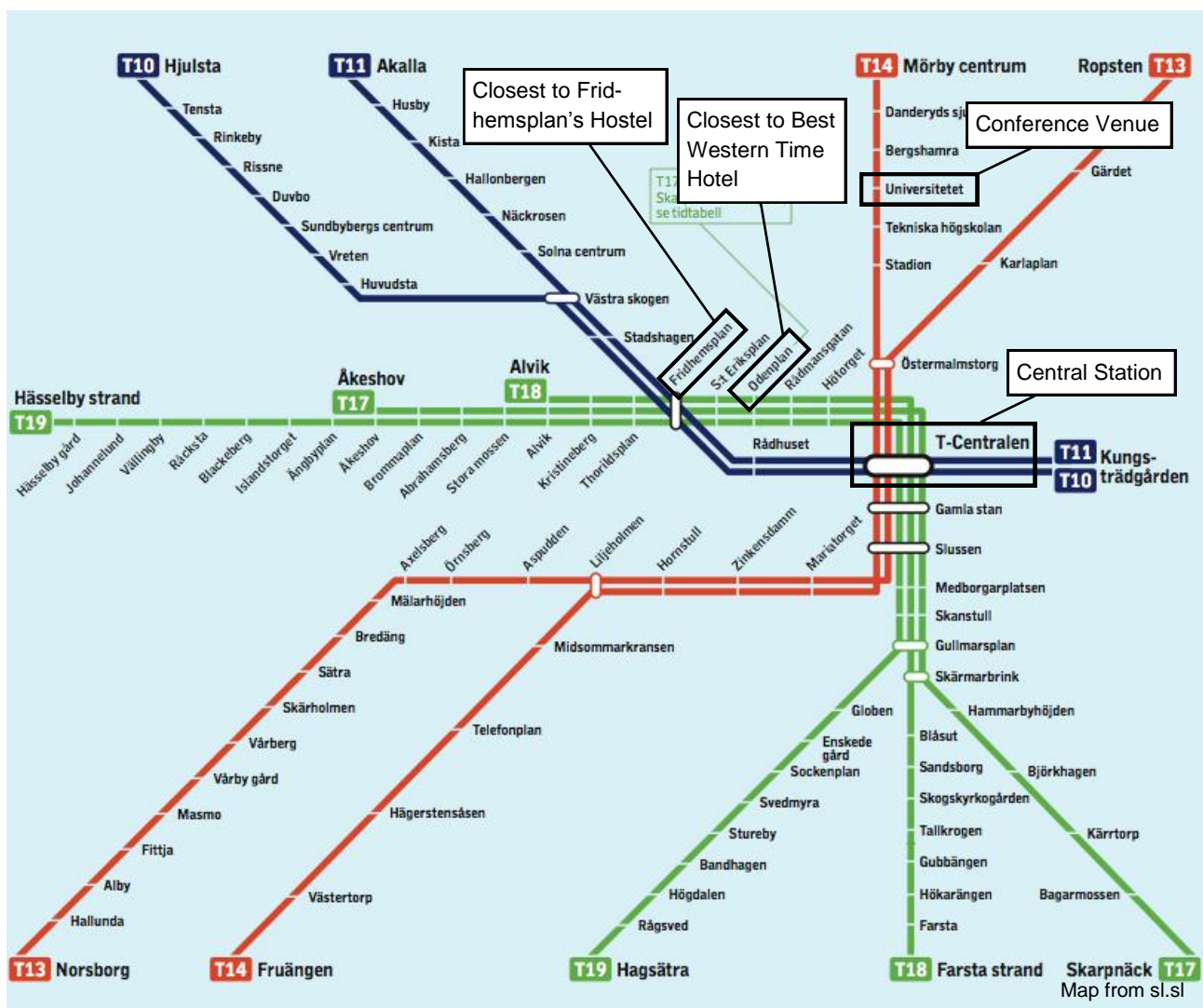
# How to Get Around in Stockholm

## Subway

Stockholm's subway system is clean and safe. It's the primary way of travel in the region. Trains are frequent in the city so you don't need a time table. You find the complete subway map below.

The central station is called **T-Centralen**. That's the station closest to Scandic Continental Hotel. The station at the conference venue is called **Universitetet**. The station closest to Best Western Time Hotel is called **Odenplan** but you'll have to go to central station and change to the train towards the venue. Read more under the sections on how to get to the venue.

We suggest you buy a **3 day/72 hour** ticket for **200 SEK** or a **7 day** ticket for 260 SEK. It's valid for both subway and buses. With such a ticket you can quickly pass the entrances to the subway by holding the plastic ticket against the blue readers (see picture to the right).



# How to Get Around in Stockholm

## Bus

Stockholm's buses are not as quick as the subway but are still a clean, safe, and cheap way to get around. If you don't live close to a subway station you typically take the bus. You'll need a time table. You find the time table for Bus 40 below. That's the bus line closest to Best Western Time Hotel and Fridhemsplan's Hostel.

The bus stop at the conference venue is called *Universitetet*. Read more under the sections on how to get to the venue.

We suggest you buy a **3 day/72** hour ticket for **200 SEK/20 Euro/ USD 25**. It's valid for both subway and buses. With such a ticket you can quickly pass the entrances to the subway by holding the plastic ticket against the blue readers (see picture to the right).



## Taxi / Cab

Taxis are quite expensive in Sweden. Within the city you always go by meter. These taxi companies are reliable:

Taxi Stockholm      +46-8-15 00 00

Taxi Kurir            +46-8-30 00 00

Taxi 020              +46-20-20 20 20



## Go by Bus 40 to the Venue

Your best bet on public transportation is Bus 40 (a red bus) to and from the conference venue. The bus stop at the venue is called *Universitetet*. If you prefer subway you'll have to walk along *Norr tullsgatan* to the subway station *Odenplan*, go to *T-centralen* (central subway station) and change to the Red line towards *Mörby*.

### Relevant parts of the time table for Bus 40

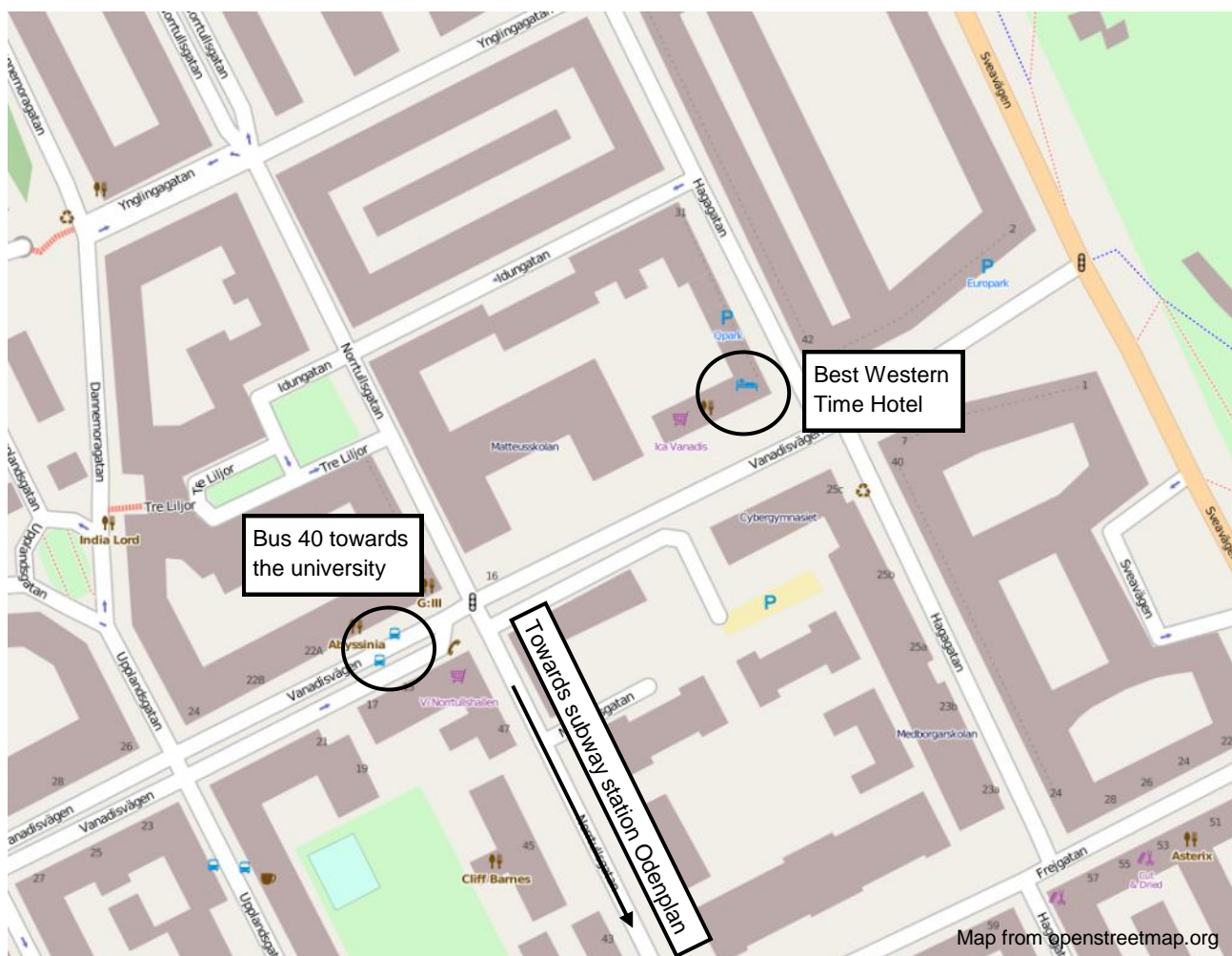
**To the venue** (the bus will arrive at the closest bus stop shortly after leaving Odenplan)

Odenplan	07:57	08:12	08:27	08:42
Universitetet	08:08	08:23	08:38	08:53

## From the venue

Universitetet	16:02	16:17	16:32	16:47	17:02	17:17	17:32
Odenplan	16:15	16:30	16:45	17:00	17:15	17:30	17:43

Full time table in Swedish is found here: <http://sl.se/ficktid/sommar/s40.pdf>



# Go by Bus 40 to the Venue

## From Fridhemsplan's Hostel

Your best bet on public transportation is Bus 40 (a red bus) to and from the conference venue. The bus stop at the venue is called *Universitetet*. If you prefer subway you'll have to walk along *Norrtullsgatan* to the subway station *Fridhemsplan*, go to *T-centralen* (central subway station) and change to the Red line towards *Mörby*.

### Relevant parts of the time table for Bus 40

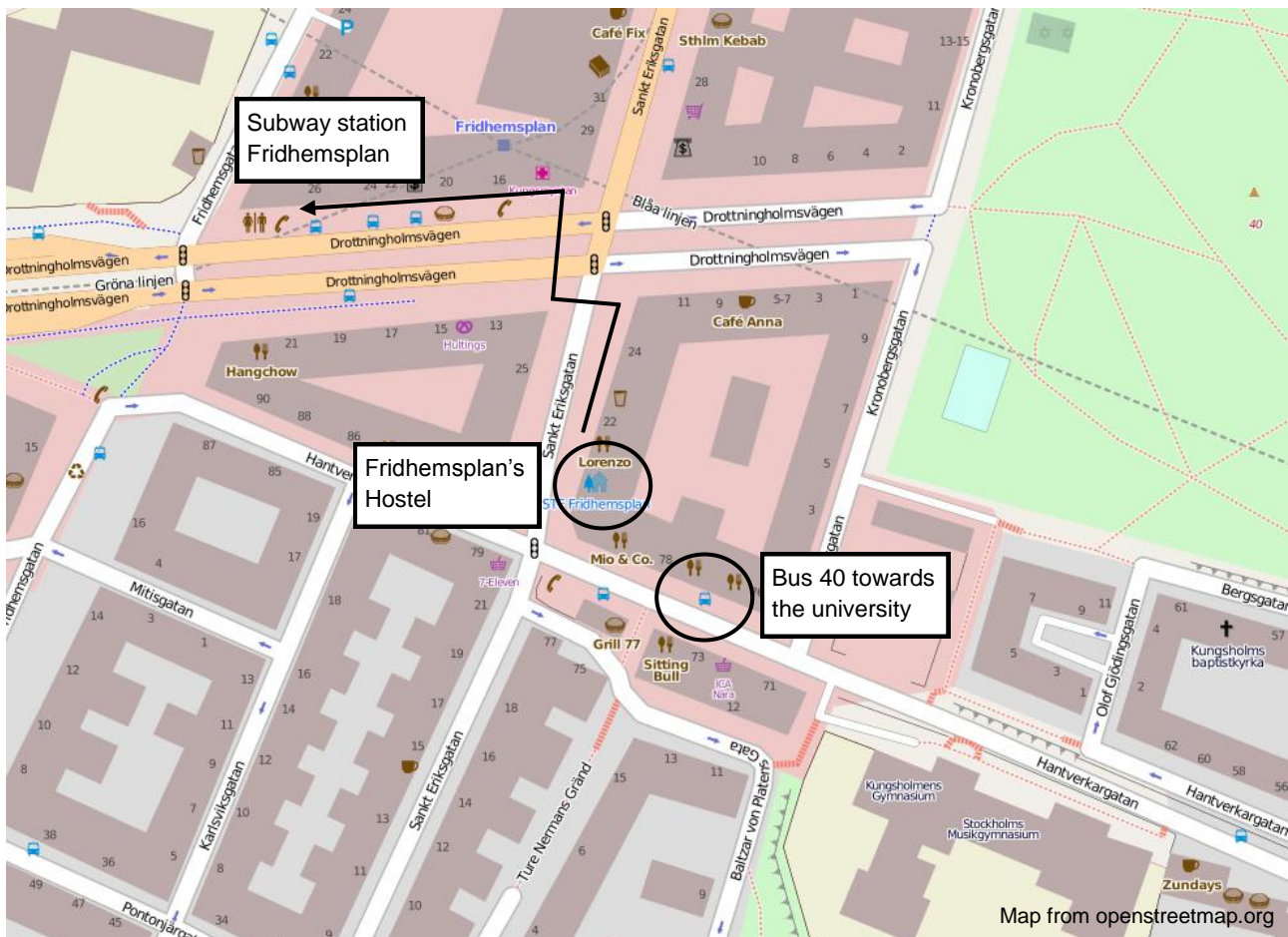
**To the venue** (the bus will arrive at the closest bus stop shortly *before* leaving Fridhemsplan)

Fridhemsplan	07:46	08:01	08:16	08:31
Universitetet	08:08	08:23	08:38	08:53

**From the venue**

Universitetet	16:02	16:17	16:32	16:47	17:02	17:17	17:32
Fridhemsplan	16:27	16:42	16:57	17:12	17:27	17:41	17:54

Full time table in Swedish is found here: <http://sl.se/ficktid/sommar/s40.pdf>





# Arriving at Venue with Bus 40

Get off Bus 40 at the bus stop named *Universitetet*.

The picture to the right show the bus stop and the red Bus 40.



Walk backwards compared to the direction of the bus ...



... walk to the opening to the left ...

... and you'll join the ones who took the subway.  
Check the final 2 minute walk under "Final Walk to Aula Magna".





# Go by Subway to the Venue

## From T-centralen (central subway station)

If you need to get a ticket see "How To Get Around in Stockholm—Subway".  
Once inside, head down to the platform for ...

**Red line towards Mörby and Ropsten.**

The sign looks like the one to the right.



Be sure to wait for a train ...

**towards Mörby.** Do not board a train towards Ropsten although they leave from the same platform.

The lit sign should say "Mörby centrum" on the top row when the right train is at the platform.



Be sure to get off ...  
**at Universitetet..**

The sign at the station looks as the picture to the right.



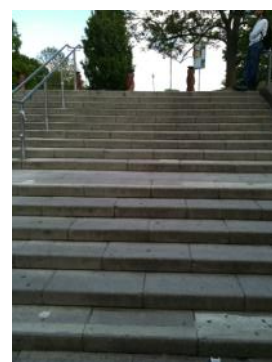
Take the escalator up ...



... go straight out ...



... walk the stairs ...



... and you'll join the ones who took the bus. Check the final 2 minute walk under "Final Walk to Aula Magna".

# Final Walk to Aula Magna



No matter if you arrived by bus or by subway you should now be at an opening with the subway entrance behind you.

Walk towards the two twisted pillars and you'll find the sign pictured to the left. On the sign you'll see "Aula Magna" which is the conference venue.

Walk straight on, pass a small canteen on your right, pass the trees and finally you'll find stairs to the right.

Go up the stairs ...



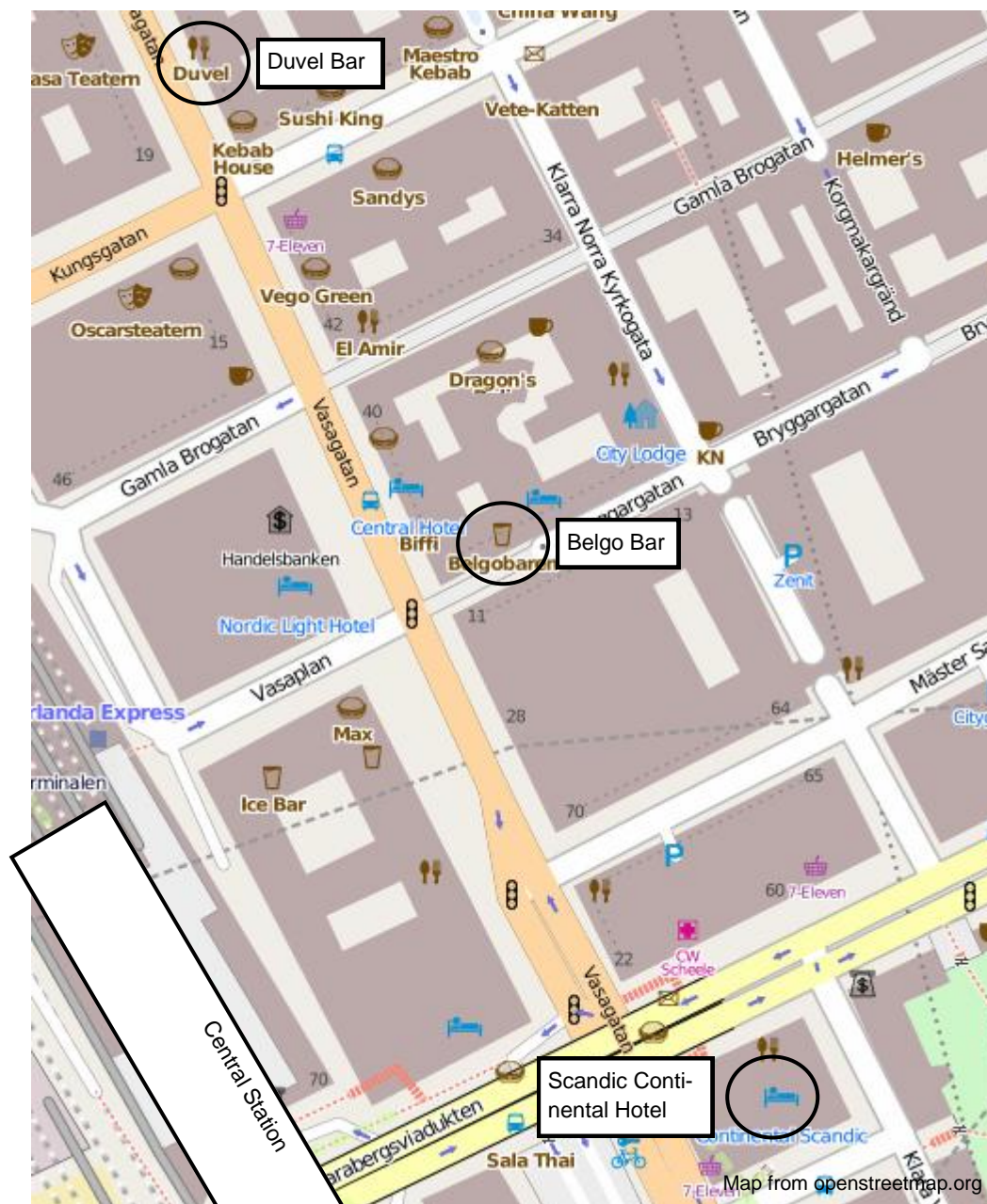


# Final Walk to Aula Magna

**Welcome!**

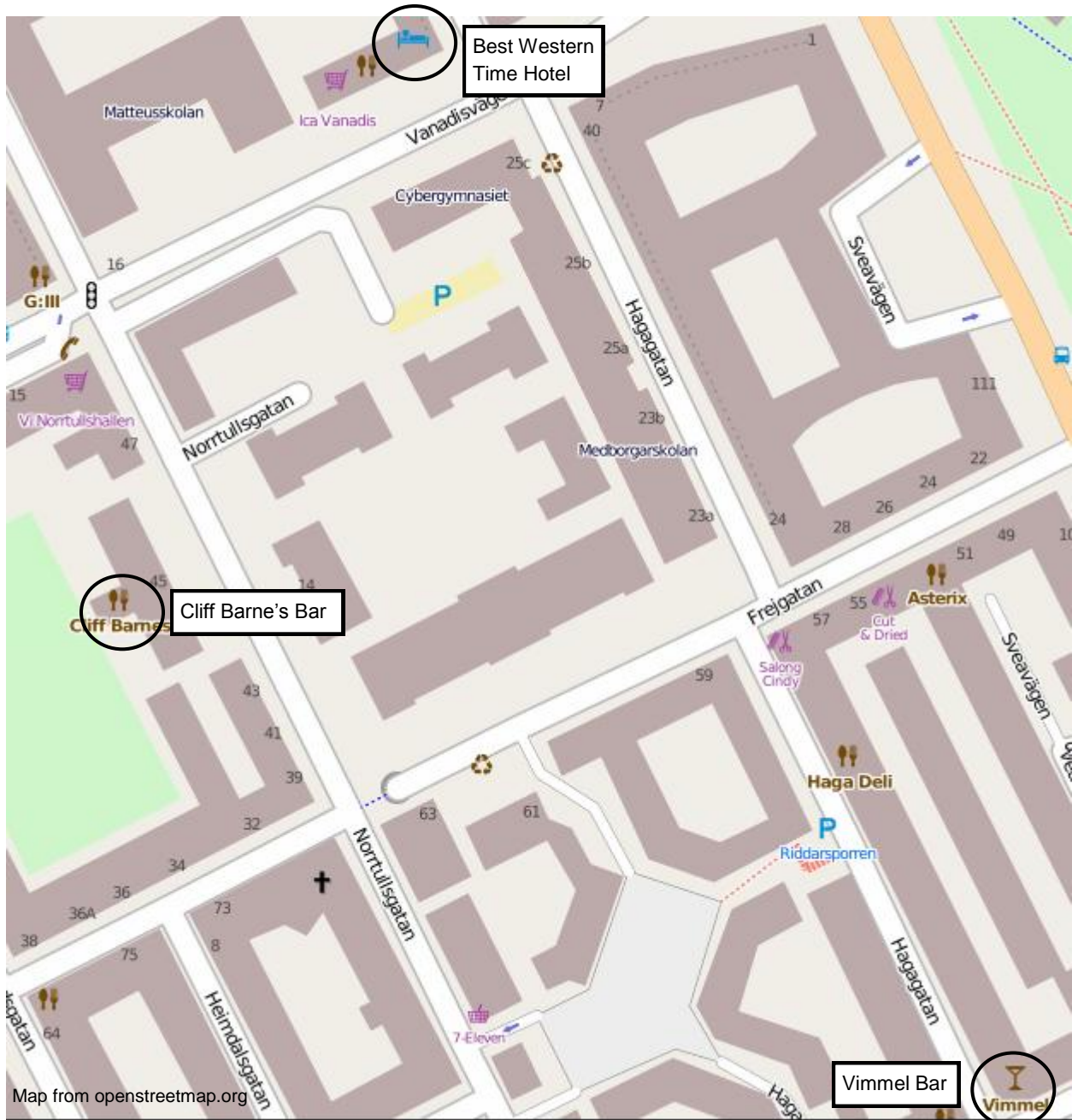


# Good Bars at Central Station

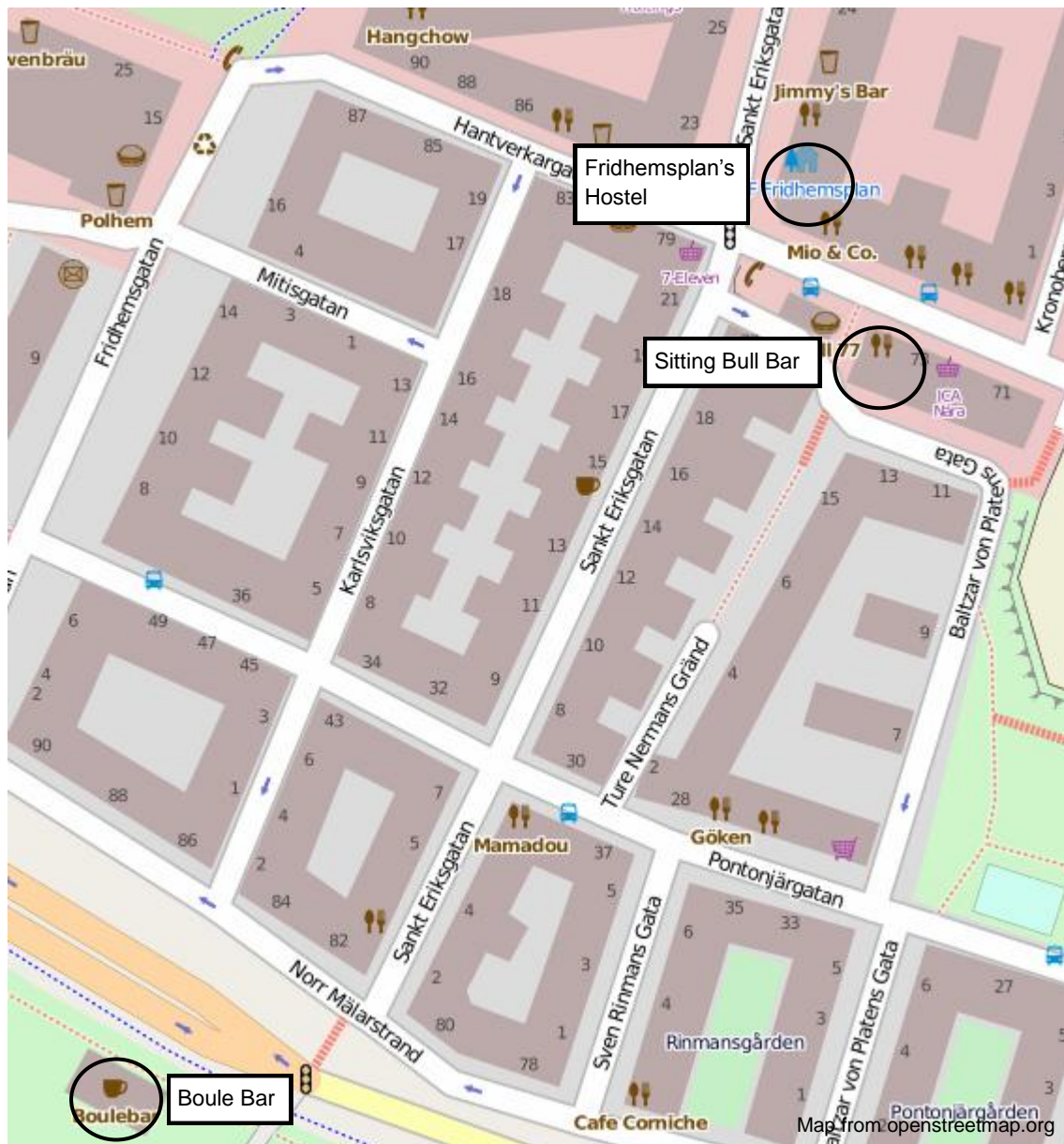




# Good Bars around Best Western



# Good Bars around Fridhemsplan





# Things to See in Stockholm

## The Vasa Museum

Year 1628, almost 400 years ago the Swedish royal battle ship Vasa sunk. 1961 she was salvaged and has since been preserved and on display at her own museum. This is an absolutely unique sight and a must for all foreign tourists.



## The Old Town

Stockholm's old town is a nice place to stroll. You can either experience the old narrow streets or walk by the water-side. A lot of small shops including souvenir shops of course.

