

(Almost) everything about passwords
that OWASP won't teach you.

Per Thorsheim

OWASP Cheat Sheets

Password Storage
Cheat Sheet

Authentication
Cheat Sheet

Forgot Password
Cheat Sheet

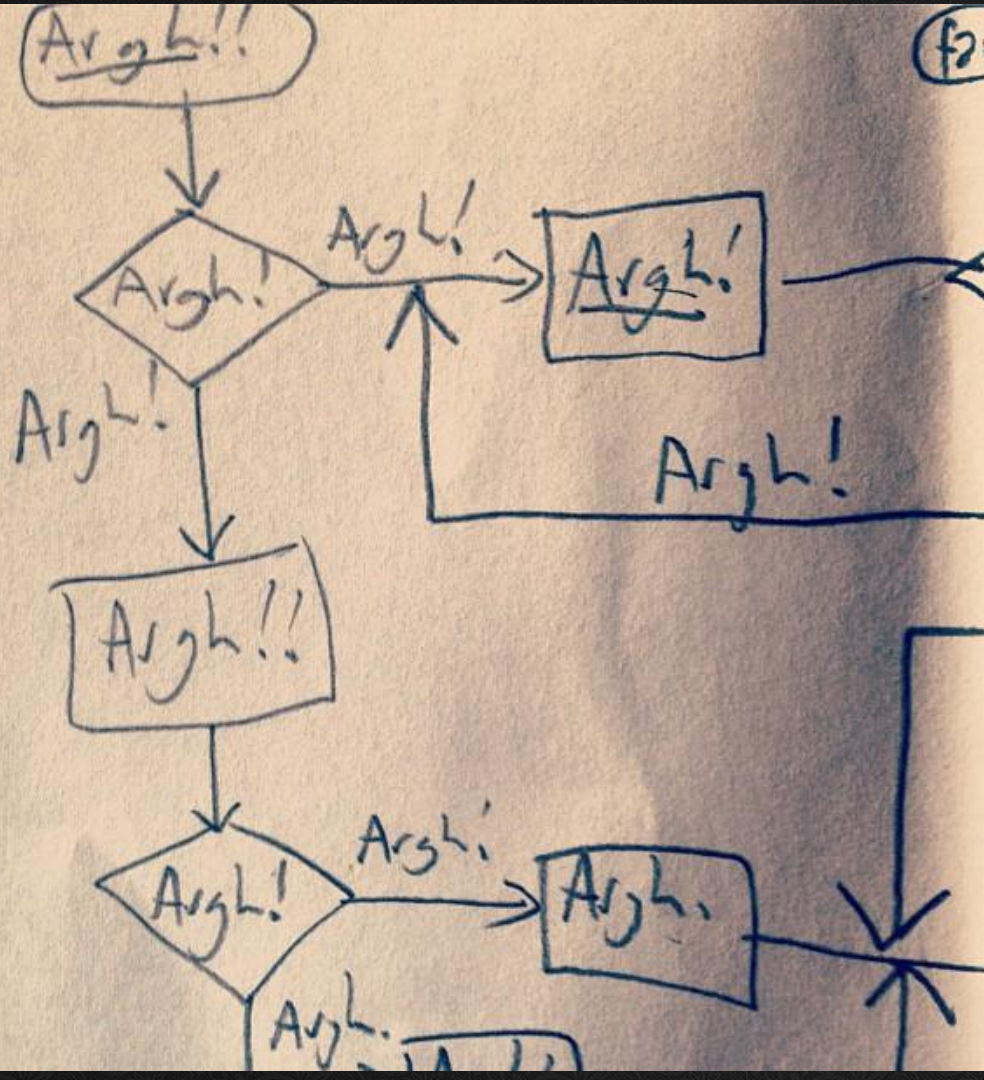
Pinning
Cheat Sheet

Things I hate:

1 VANDALISM

2 IRONY

3 LISTS.



Work / Life
Flowchart.

(As a CISO)

Opplysningsskjema kjøkken

Navn: Brukernavn:
Adresse: Passord:
Postnr.: Sted: Tegningens navn:
Tlf.nr.: E-post:

Front: Takforing: ☐ Ja ☐ Nei Takvinkel: cm.

Håndtak (navn + str.): Belysning: ☐ Ja ☐ Nei

Benkeplate standard lengder (lagerført, max. 246 cm lengder):

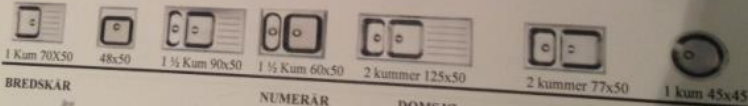
☐ Laminat Navn + farge:
☐ Heltre Navn + tresort:

Benkeplate måltipasset (bestillingsvare, ca. 4 ukers leveringstid):

☐ Laminat Farge: Kant: ☐ Avrundet ☐ Svart/stål ☐ Stål
☐ Rett ☐ Hvit/stål ☐ Aluminium
☐ Alufarget plast ☐ Trefarget plast
☐ Heltre Tresort:
☐ Stein Farge: Kant: ☐ Stein ☐ Stein/stål
☐ Akryl Farge: Kant: ☐ Akryl ☐ Aluminium

Vask (navn+str.): Underlimt: ☐ Ja ☐ Nei Blande batteri:

BOHOLMEN



BREDSKÅR



Ønsker forslag til skuffeinneordning/ oppbevaringsløsning:
☐ JA ☐ NEI



Account creation form @ikea

Please enter
preferred username
+ password.

Online bank in Kuwait

Password

- The password remains your most important line of protection. It is used for login and to perform transactions in KFHOnline. Please keep it to yourself.
- We highly recommend that you use the provided virtual keyboard with randomly ordered keys to deter others from identifying your password.



Please enter the password

Password :

Login

Usability in a nutshell



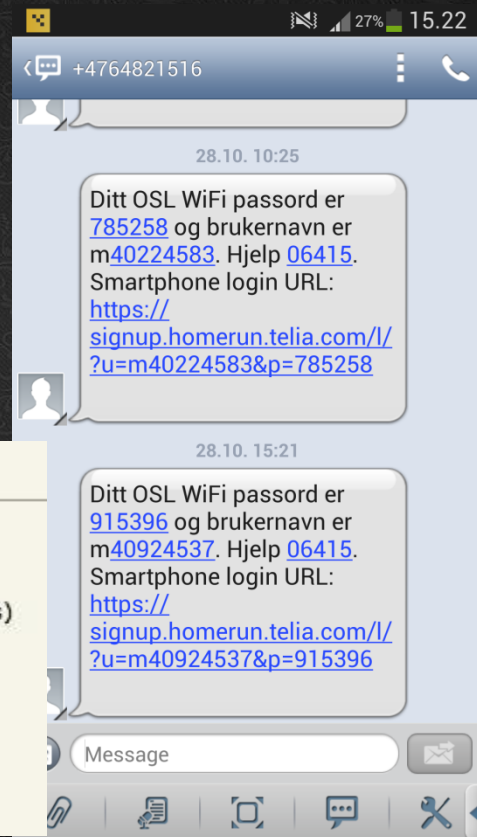
Change My Password

The Password you have chosen is already taken. Please try again.

New Password: (maximum of 10 characters)

Confirm New Password:

Save My Changes



1234

3268

5555

Per Thorsheim
Phone: +47 90 99 92 59
lovabakken 37
N-5145 Fyllingsdalen
Norway

8822

1971

8192

1433

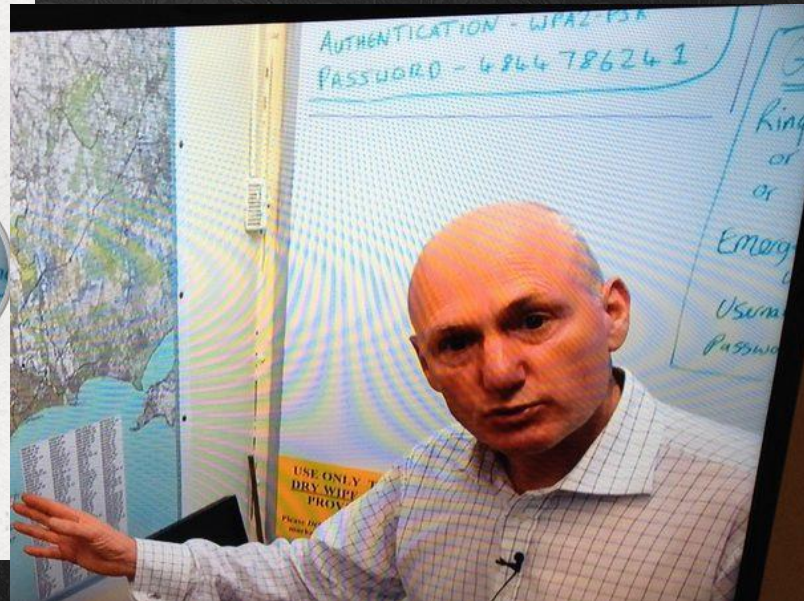
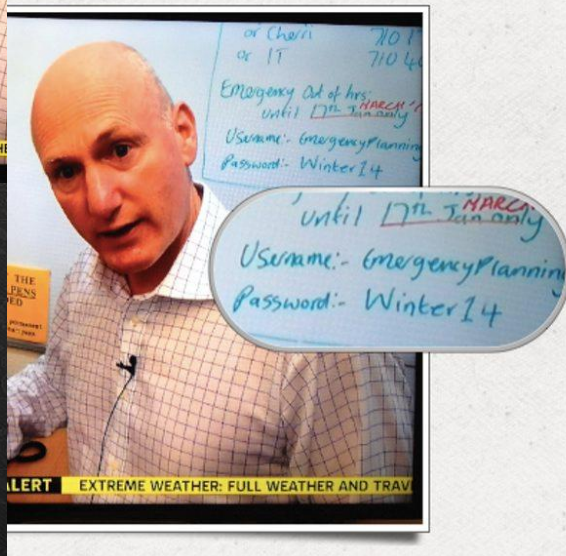
8897

9999

5600

0000

Passwords are *everywhere*



PIN:

0000 + OK

Trykk så:

Avstille

Tilbakestille



[+] WPA PSK: 'EndJGhJgwcsNDcxN2BvVGPLZCWXdQU363VC'

[+] WPS PIN: '39740328'



Home Profile Messages

Woo hoo! Your password has been changed!

Please be sure to memorize it or note it in a safe place.

Proceed to your account

INTERNET – GUEST NET IN THE RECEPTION

has installed an
internet guest net in the reception area.

Username:

Password: QwEAsDZxC!2#4

17yr teens – pick your PIN

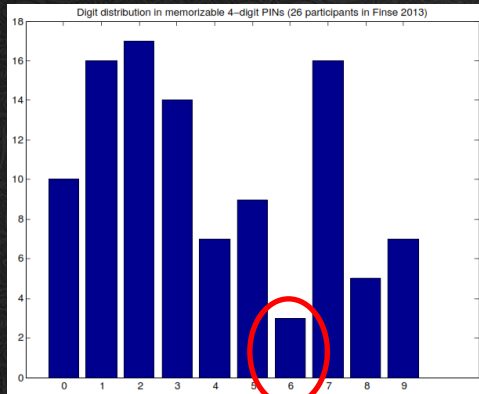


Girls
1996

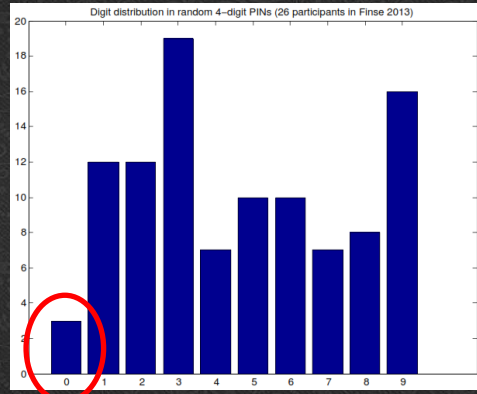
Boys
1337
1996

Digit distribution for PINs

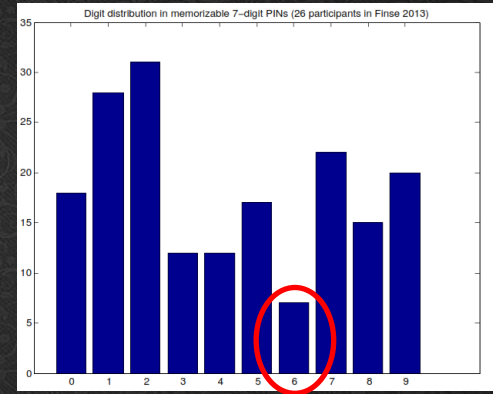
4-digit memorable



4-digit non-memorable



7-digit memorable



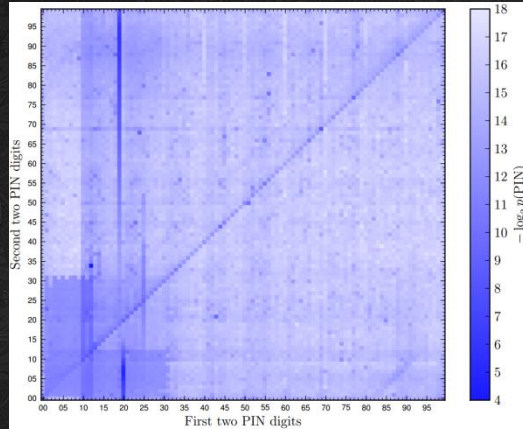
Digit 0 is not «random» enough?

Digit 6 is hard to remember?

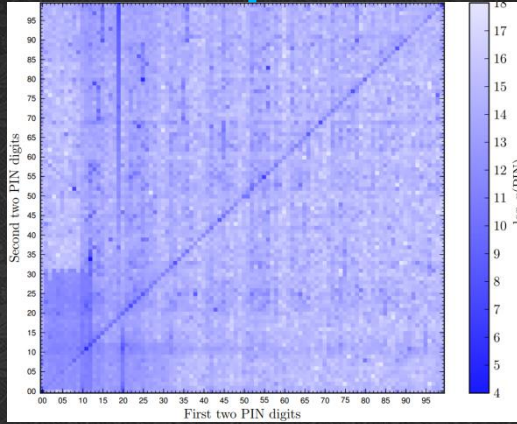
Thank you to Andrey Bogdanov, Sondre Rønjom & Jan Fredrik Leversund for great help!

Heatmapping PINs

Rockyou



iPhone



Physical access
Control system



Radical.org/pinmap
By @kluzz

A birthday present every eleven wallets? The security of customer-chosen banking PINs

http://www.cl.cam.ac.uk/~jcb82/doc/BPA12-FC-banking_pin_security.pdf

http://www.cl.cam.ac.uk/~jcb82/doc/BPA12-FC-banking_pin_security-slides_ss.pdf

Daniel Amitay:

<http://danielamitay.com/blog/2011/6/13/most-common-iphone-passcodes>

Look, and you shall see... PINs.



Guess What?

**YOU ARE
PREDICTABLE!**

What's the value of a password?

The image shows a screenshot of the Twitter profile page for The Associated Press (@AP). The background of the header is a collage of hands with henna designs. The profile picture is the AP logo. The bio states: "News, discussion and a behind-the-scenes look at the process from The Associated Press. Managed 24/7 by a team of editors based in NY: apne.ws/APStaff". The location is "Global" and the website is "www.ap.org". The statistics show 50,187 tweets, 7,012 following, and 1,903,328 followers. A "Follow" button is visible. Below the header, the "Tweets" section shows a tweet from @AP: "Breaking: Two Explosions in the White House and Barack Obama is injured".

AP
The Associated Press @AP
News, discussion and a behind-the-scenes look at the process from The Associated Press. Managed 24/7 by a team of editors based in NY: apne.ws/APStaff
Global • www.ap.org

50,187 TWEETS 7,012 FOLLOWING 1,903,328 FOLLOWERS Follow

Tweets All / No replies

AP The Associated Press @AP 2m
Breaking: Two Explosions in the White House and Barack Obama is injured
Expand

Consequences?



Tuesday, June 5, 2012, on Twitter:

**Kore
Logic**

CrackMeIfYouCan Something BIG is brewing. CHANGE YOUR PASSWORD NOW on all major sites. Yes, those CAPS are on purpose :)

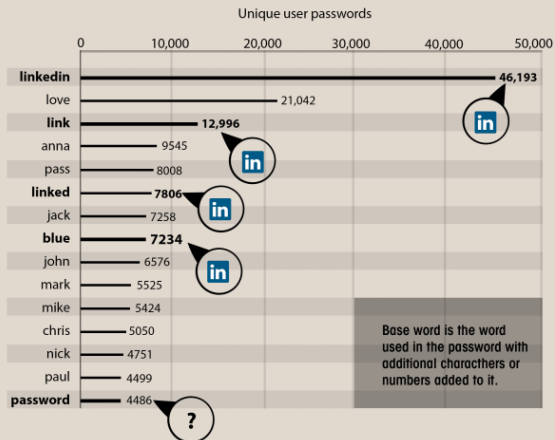
8:00 PM Jun 5th from web

Lessons from LinkedIn

LINKEDIN: BASE WORDS

The LinkedIn list containing 5.8 million unique password hashes is now over 90% cracked. These are the top words users are basing their passwords on.

TOP 15 BASE WORDS USED IN LINKEDIN PASSWORDS



= Can this be connected to LinkedIn?

Information & statistics by:
Jeremi Gosney (@jergosney)
Per Thornheim (@thornheim)

Infographic & ideas by:
Tom Kristian Tønnesen

EVRY
www.evry.com

LINKEDIN: PASS PHRASES

Over 200 LinkedIn passwords we cracked were over 20 characters long. So how did we crack them? Quotes, Bible verses, band names, song titles and lyrics, etc. all make very bad passwords. If the phrase you have in mind exists anywhere in writing, it's probably in someone's wordlist and can be cracked with a rudimentary dictionary attack.

BAD PASS PHRASES FOUND ON LINKEDIN



Other used pass phrases:

look at my horse my horse is amazing
from genesis to revelations
happy healthy wealthy and wise
give me liberty or give me death
chi va piano va sano e va lontano
east of the sun west of the moon
every cloud has a silver line
yo no quiero volver me tan loco
elvis has left the building

big trouble in little china
what the f*ck is happening
forever blowing bubbles
work smarter not harder
you are my sunshine <3
I need a vacation
you get what you give
crisscross applesauce
everything is destined

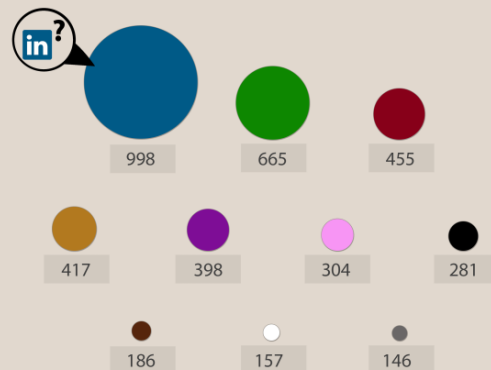
Information & statistics by:
Per Thornheim &
Jeremi Gosney (@jergosney)

Infographic & ideas by:
Tom Kristian Tønnesen
EVRY

LINKEDIN: POP COLORS

The leaked list containing over 5.8 million password hashes from LinkedIn is now over 90% cracked. These are the top colors represented in users' passwords.

TOP COLORS USED IN LINKEDIN PASSWORDS



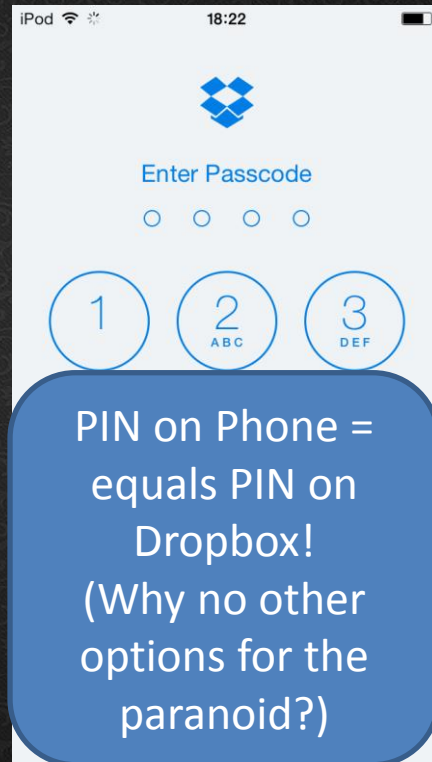
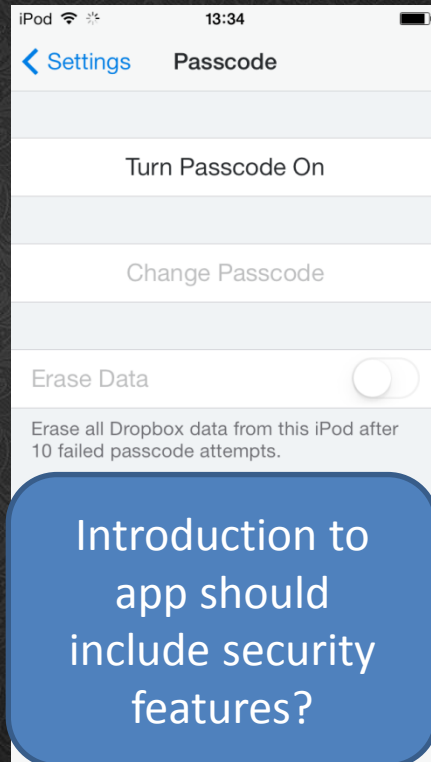
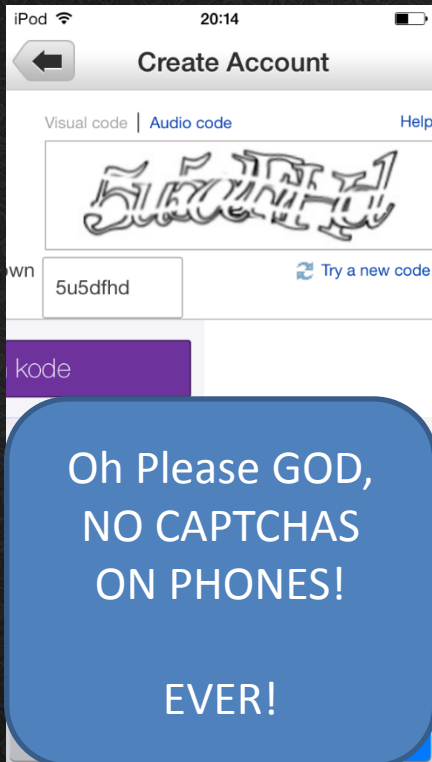
* Numbers = unique user passwords

= Can this be connected to LinkedIn?

Information & statistics by:
Per Thornheim &
Jeremi Gosney (@jergosney)

Infographic & ideas by:
Tom Kristian Tønnesen
EVRY


Mobile Usability #1



Foursquare – Verify mail account

iPod 16:17

← Sign Up Join

 John
Johansen

Email john@godpraksis.no

Password ••••••••••

Birthday 10. september 1971


Gender Male

Phone Optional



iPod 16:17

← Sign Up Join

 John
Johansen

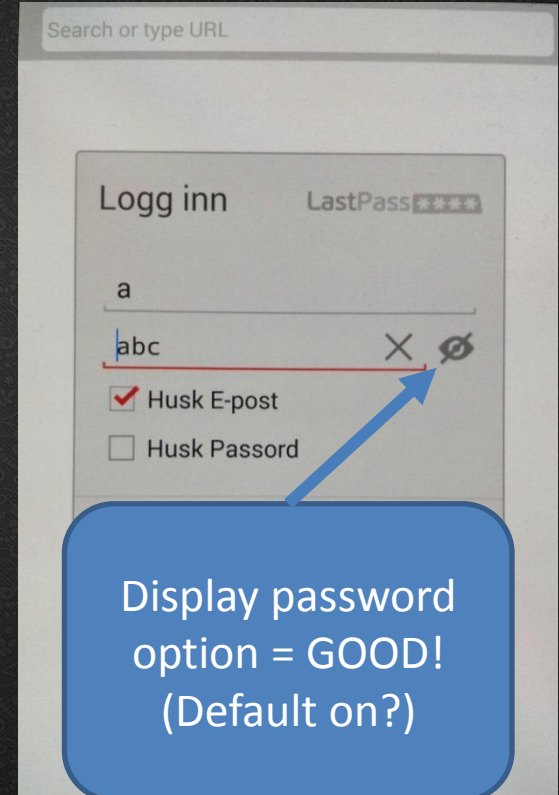
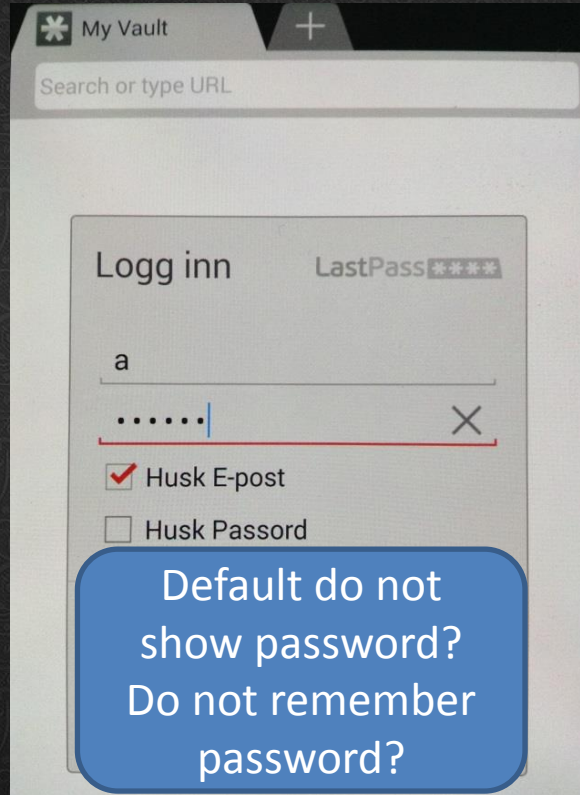
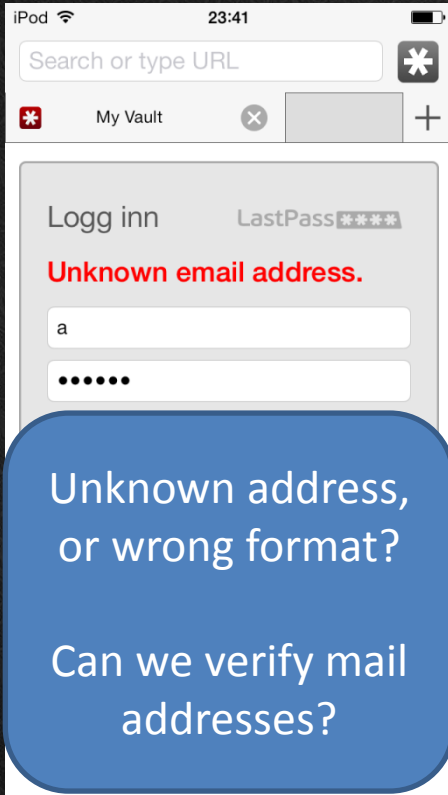
Did you enter your email correctly?
john@godpraksis.no

No Yes

Gender Male

Phone Optional

Lastpass – iOS & Android



Tip For Mobile Usability:



=

Johansen
56426736



Password Meters

The password you entered is not valid

Please note that the password must respect the following rules:

- It must contain between 7 and 32 characters. Use only characters from the following set: ! # \$ % & () * + , - . / 0 1 2 3 4 5 6 7 8 9 : ; < = > ? @ A B C D E F G H I J K L M N O P Q R S T U V W X Y Z [\] _ ` a b c d e f g h i j k l m n o p q r s t u v w x y z { | } ~
- It must contain at least 1 lowercase letter(s) (abcdefghijklmnopqrstuvwxyz).
- It must contain at least 1 capital letter(s) (ABCDEFGHIJKLMNOPQRSTUVWXYZ).
- It must contain at least 1 numeric character(s) (0123456789).
- It must not contain more than 2 identical consecutive characters (AAA, iiiii, \$\$\$\$\$\$...).
- It must not contain your user name.
- It must not contain your email address.
- It must not contain your first name.
- It must not contain your last name.

7-8-05 © 2005 Scott Adams, Inc./Dist. by UFS, Inc.

STARTING TODAY,
ALL PASSWORDS MUST
CONTAIN LETTERS,
NUMBERS, DOODLES,
SIGN LANGUAGE AND
SQUIRREL NOISES.



En konto er alt du trenger

Ett enkelt brukernavn og passord lar deg bruke alt fra Google.



Bruk Google på din

Konfigurer profilen din og innstillingene



Ta med deg alt

Bytt mellom enheter, og fortsett der du slapp.

Passordstyrke: For kort

Bruk minst åtte tegn. Ikke bruk et passord fra et annet nettsted, eller noe altfor opplagt, som navnet på kjæledyret ditt. [Hvorfor?](#)

Navn

Velg deg et brukernavn

[Jeg foretrekker å bruke den nåværende e-postadressen min](#)

Lag et passord

Bekreft passordet

Fødselsdato

Kjønn

Mobilnummer

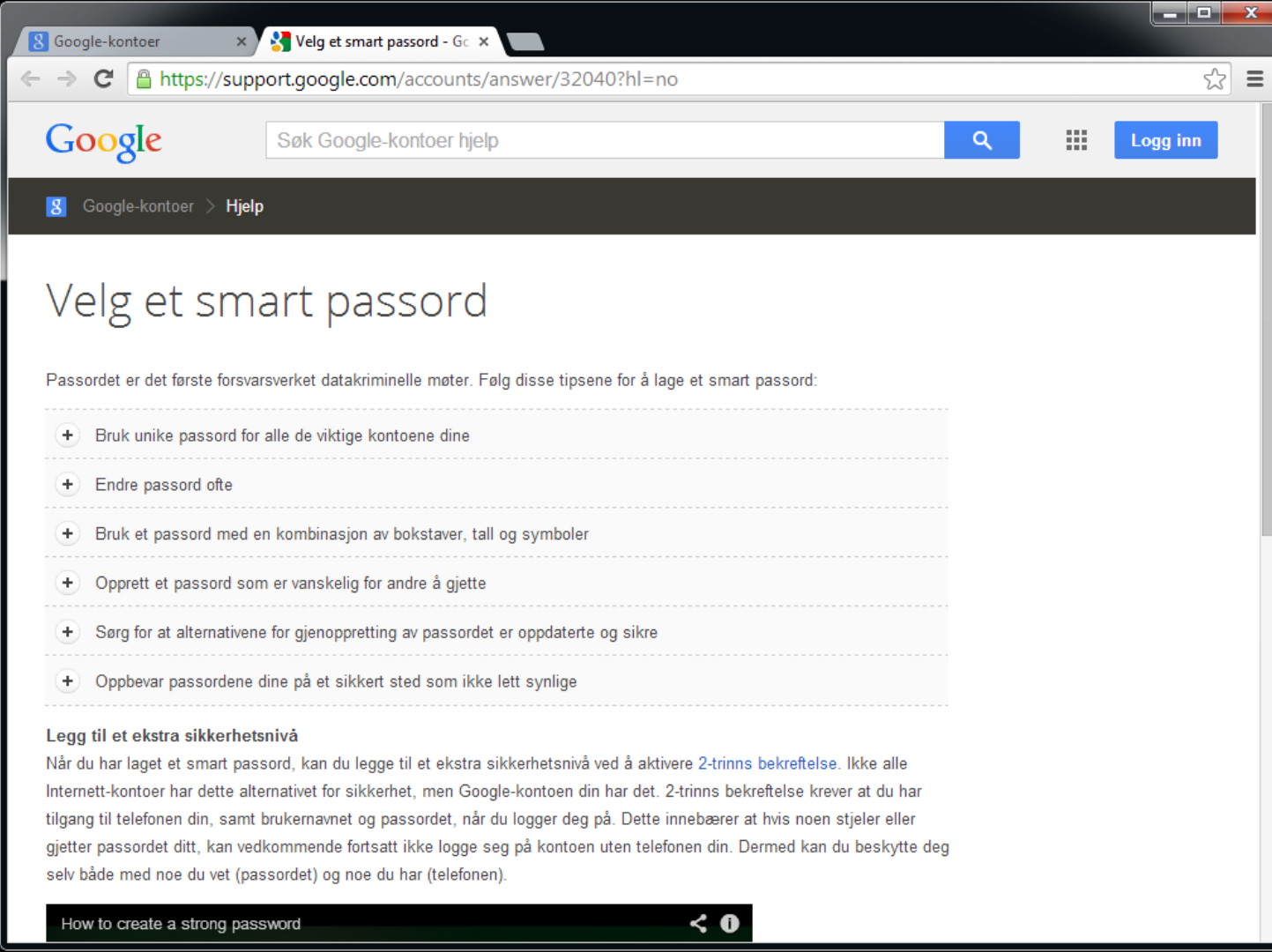
Gjeldende e-postadresse

Bevis at du ikke er en robot

☐

Hopp over denne bekreftelsen (telefonbekreftelse)

Google
account
creation



Give
sound
advice
--
Recommend
2FA

«Secret» Mail + Phone

facebook

E-post eller mobil Passord [Logg inn](#)

☐ Forbli pålogget [Glemt passordet?](#)

Finn brukerkontoen din

E-post, telefon, brukernavn eller fullt navn



Jeg kan ikke identifisere brukerkontoen min [Søk](#) [Avbryt](#)

facebook

E-post eller mobil Passord [Logg inn](#)

☐ Forbli pålogget [Glemt passordet?](#)

Tilbakestill passordet?

Hvordan vil du tilbakestille passordet?

☒  Send en lenke på e-post for å tilbakestille passordet
j***@g*****.no

☐ Ikke deg?

Har du ikke lenger tilgang til disse? [Fortsett](#)


facebook


E-post eller mobil Passord [Logg inn](#)


☐ Forbli pålogget [Glemt passordet?](#)

Tilbakestill passordet?

Hvordan vil du tilbakestille passordet?

☒  Send en lenke på e-post for å tilbakestille passordet
no

☐  Send en kode på SMS for å tilbakestille passordet
+*****4

☐  Få en kode fra smarttelefonen min

Facebook-bruker
Ikke deg?

Har du ikke lenger tilgang til disse? [Fortsett](#) [Avbryt](#)

Facebook
2FA in use! 😊

Starttls.info

Does your mail server support [STARTTLS](#)?

If you care about privacy, it should.

Results for: [wikileaks.org](#)

Mail server	Result
mx.wikileaks.org	Score: 40.0% ▼

Certificate

- The certificate is self-signed.
- There are one or more fatal problems which causes the certificate not to be trusted.

There are validity issues for the certificate. For SMTP servers, certificates aren't necessarily verified, so this doesn't mean that STARTTLS **definitely** won't be used.

Generally speaking it's a **bad** practice not to have a valid certificate, and an even worse practice not to verify them. Any attempted encrypted communication is left all but wide open to Man-in-the-Middle attacks. In the post-Snowden era; even more so.

Protocol

- Supports SSLV3
- Supports TLSV1
- Supports TLSV1.1
- Supports TLSV1.2

Key exchange

- Anonymous Diffie-Hellman is accepted. This is susceptible to Man-in-the-Middle attacks.
- Key size is 2048 bits; that's good.

Cipher

- Weakest accepted cipher: 0.
- Strongest accepted cipher: 256.

[Check another!](#)

This is an open beta. Expect much to change.

Developed by [Einar Otto Stangvik](#) / [indevo](#)

RFC 2487 -> RFC 3207

Transparent opportunistic encryption using
SSL/TLS between to SMTP servers

RFC requires public servers to accept sending &
receiving plaintext

Self-signed, expired, SSLv2, RC4, MD5,
Anonymous DH, 40-56 bits encryption keys...

We've found the dark side of SSL!
(please contribute by testing domains.)

Operation Face Factor

- Unique opportunity (!)
- 5000+ «headshots»
- Passwords + other information available
- Analyze!

Categorization

Facial hair

No

Mustache

Small beard

Full beard

«Porn donut»

«Unix guru»



Sex

Glasses (Y/N)

Hair color

Facial hair



Hair color

No ☺

«Blond»

Superblond

Brunette

Redhead

«Silver fox»

... and the results?

Women prefer length.

Men prefer wider selection (entropy).

«Unix gurus» have the worst passwords.

Getting hacked may be good?





PasswordsCon
Las Vegas, Aug 5-6
co-located with
BSidesLV

Trondheim (Norge)
Dec 7-8

passwordscon.org

Applied Risk Analysis



A final note + video

«Never write down your password»

Thank you!



in/thorsheim



securitynirvana.blogspot.com



@thorsheim



/GodPraksis



/user/thorsheim



per.thorsheim



Available on RedPhone for Android