



WebScarab

Presentation screen captures and diagrams

Colin Watson
Watson Hall Ltd
colin.watson(at)owasp.org

OWASP

OWASP London, 16th April 2010

Copyright © The OWASP Foundation
Permission is granted to copy, distribute and/or modify this document
under the terms of the OWASP License.

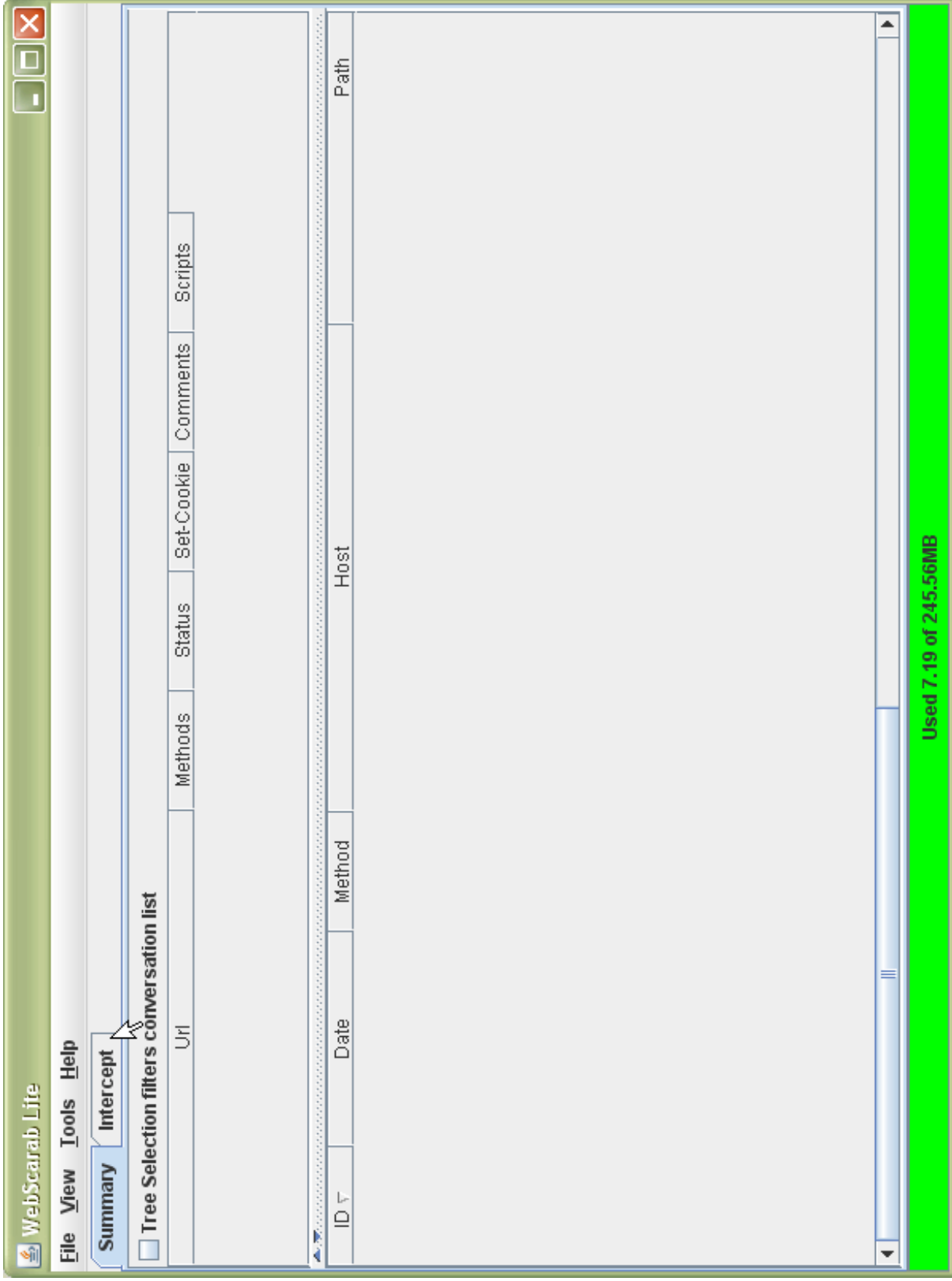
The OWASP Foundation
<http://www.owasp.org>

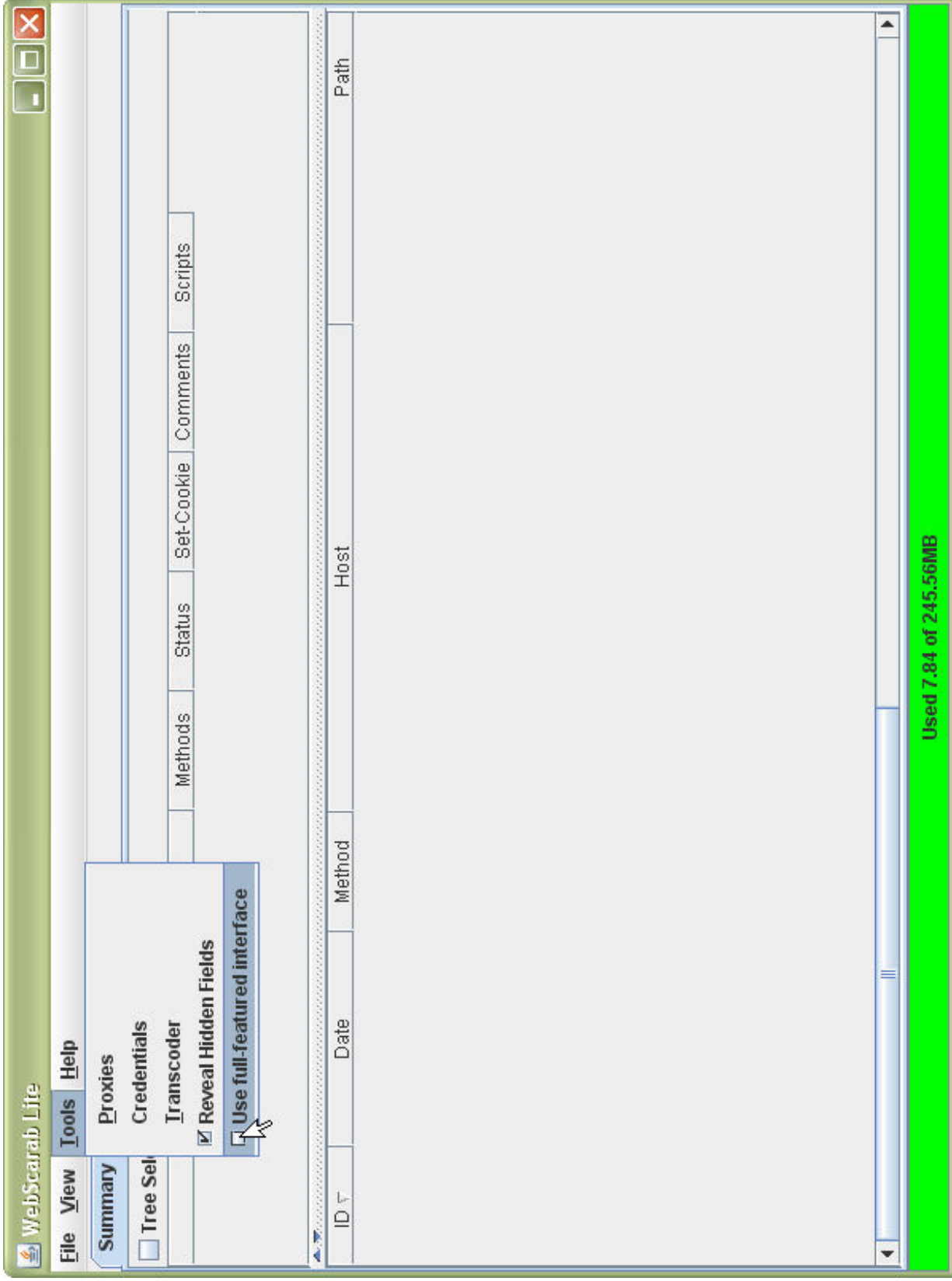
Outline

- Installing WebScarab
- Setting up
- Logging
- Requests and responses
- Additional resources

Notes are available as a separate document at

http://www.owasp.org/index.php/London/Training/OWASP_projects_and_resources_you_can_use_TODAY





WebScarab

File View Tools Help

Extensions XSS/CRLF SessionID Analysis Scripted Fragments Fuzzer Compare Search
 Summary Messages Proxy Manual Request WebServices Spider

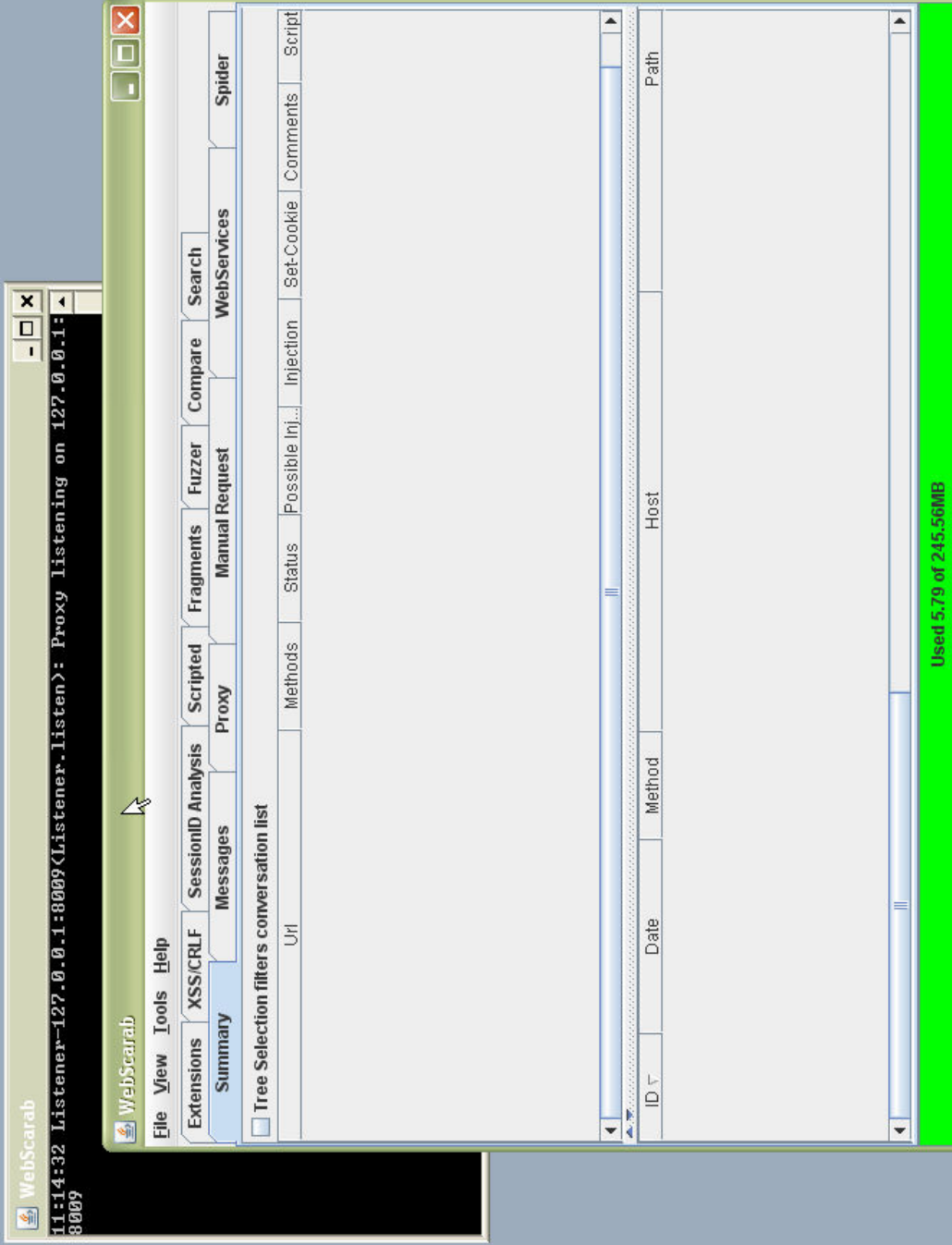
Tree Selection filters conversation list

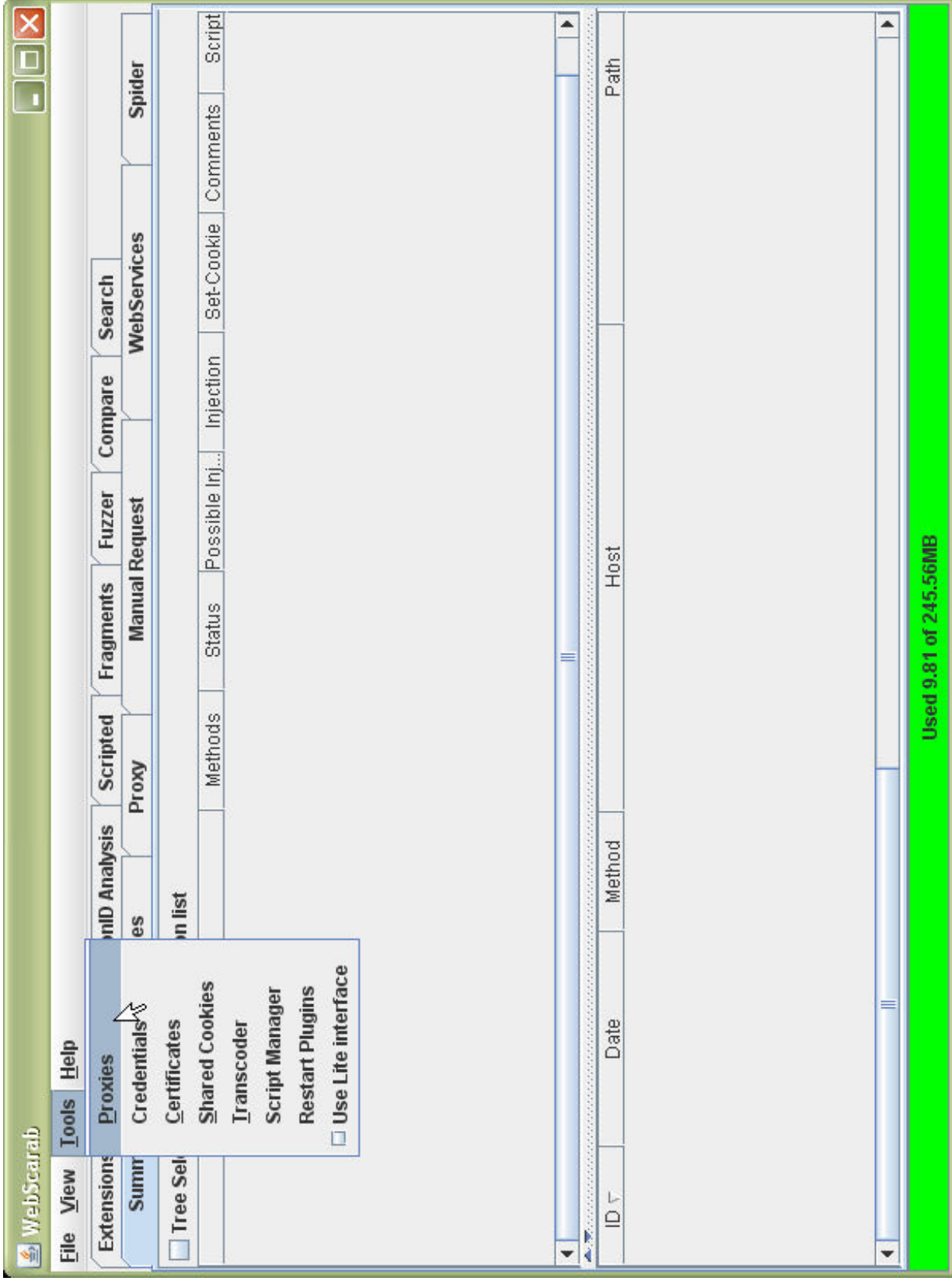
Url	Status	Possible Inj...	Injection	Set-Cookie	Comments	Script

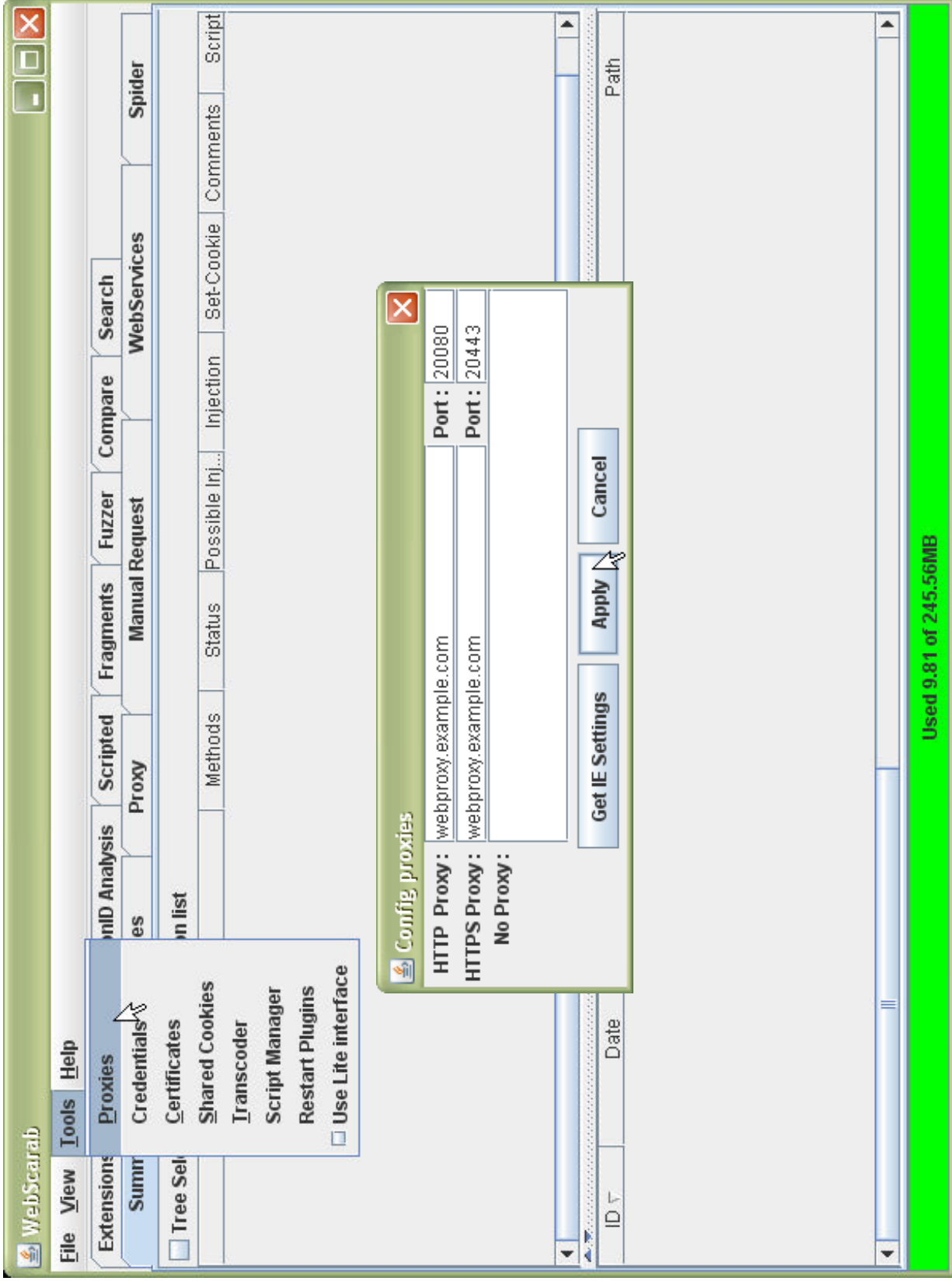
ID	Date	Method	Host	Path

Used 6.66 of 245.56MB



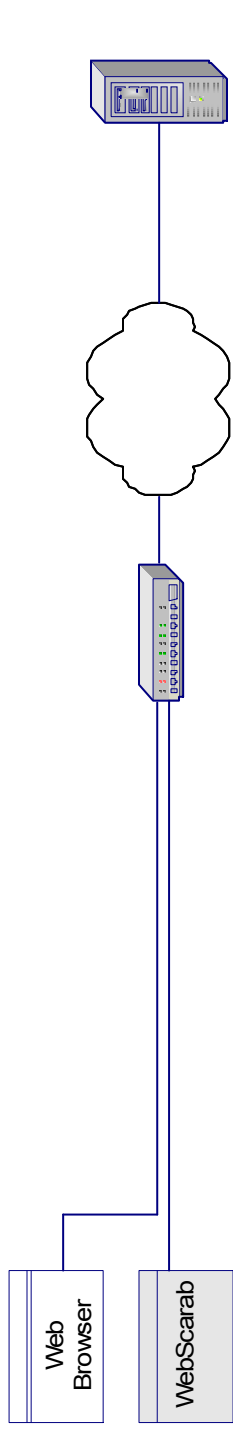






Used 9.81 of 245.56MB

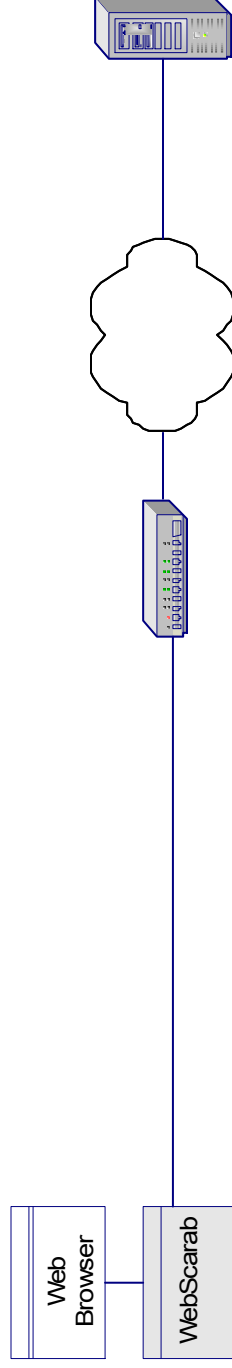




YOUR COMPUTER

NETWORK PROXY
(OPTIONAL)

WEB SERVER

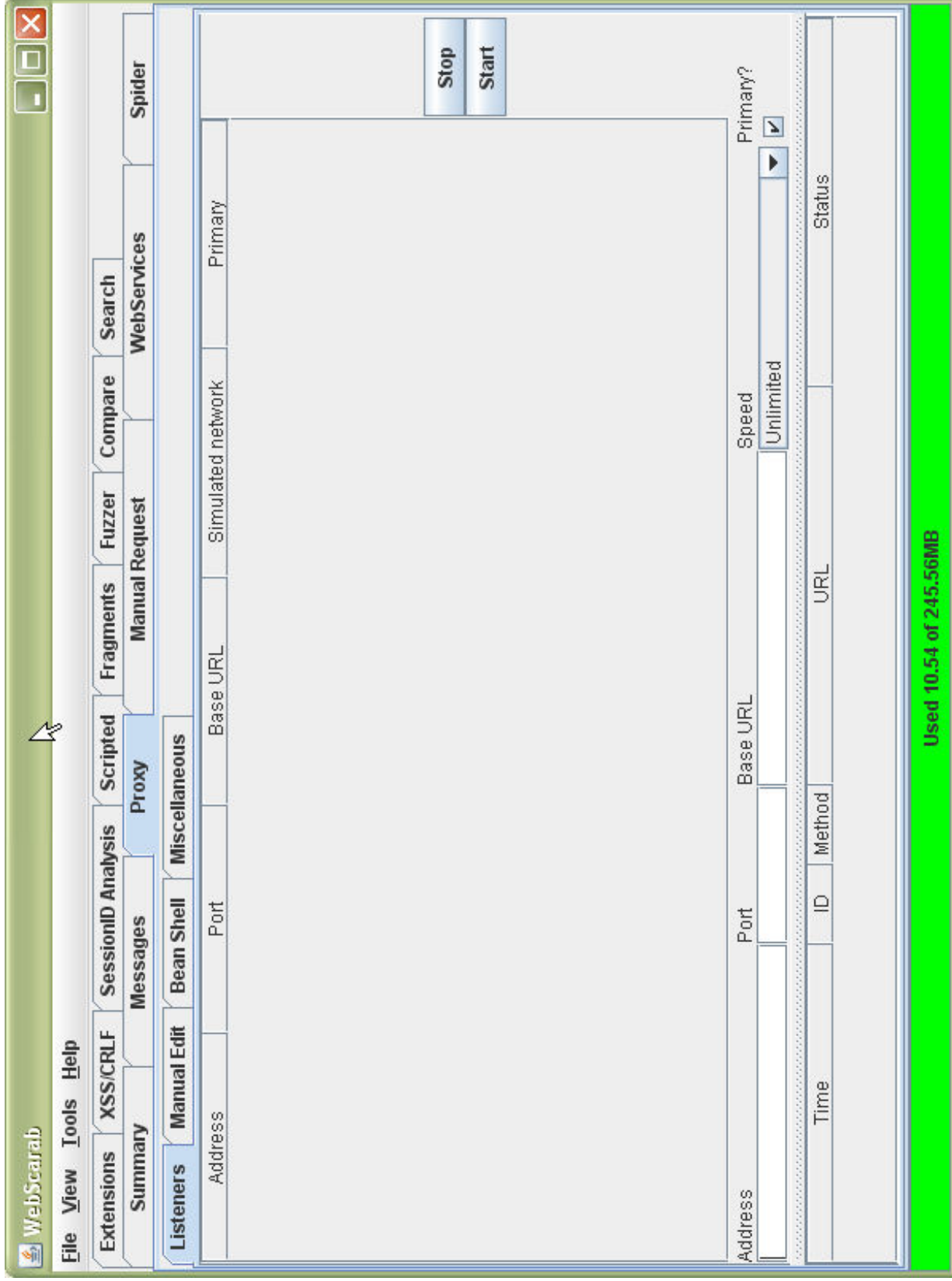


YOUR COMPUTER

NETWORK PROXY
(OPTIONAL)

WEB SERVER





WebScarab

File View Tools Help

Extensions XSS/CRLF SessionID Analysis Scripted Fragments Fuzzer Compare Search WebServices

Summary Messages Bean Shell Miscellaneous

Listeners Manual Edit Proxy Manual Request Spider

Address Port Base URL Simulated network Primary

Address 127.0.0.1 Port 8009 Base URL

Time ID Method URL

Speed Unlimited 28k modem 56k modem Bonded ISDN DSL (384k down, 128k up) ISDN T1

Primary?

Used 8.15 of 245.56MB

Stop Start

WebScarab

File View Tools Help

Extensions XSS/CRLF SessionID Analysis Scripted Fragments Fuzzer Compare Search WebServices

Summary Messages Bean Shell Miscellaneous Manual Request Spider

Listeners Manual Edit

Address	Port	Base URL	Simulated network	Primary
127.0.0.1	8009		Unlimited	<input checked="" type="checkbox"/>

Speed Unlimited

Primary?

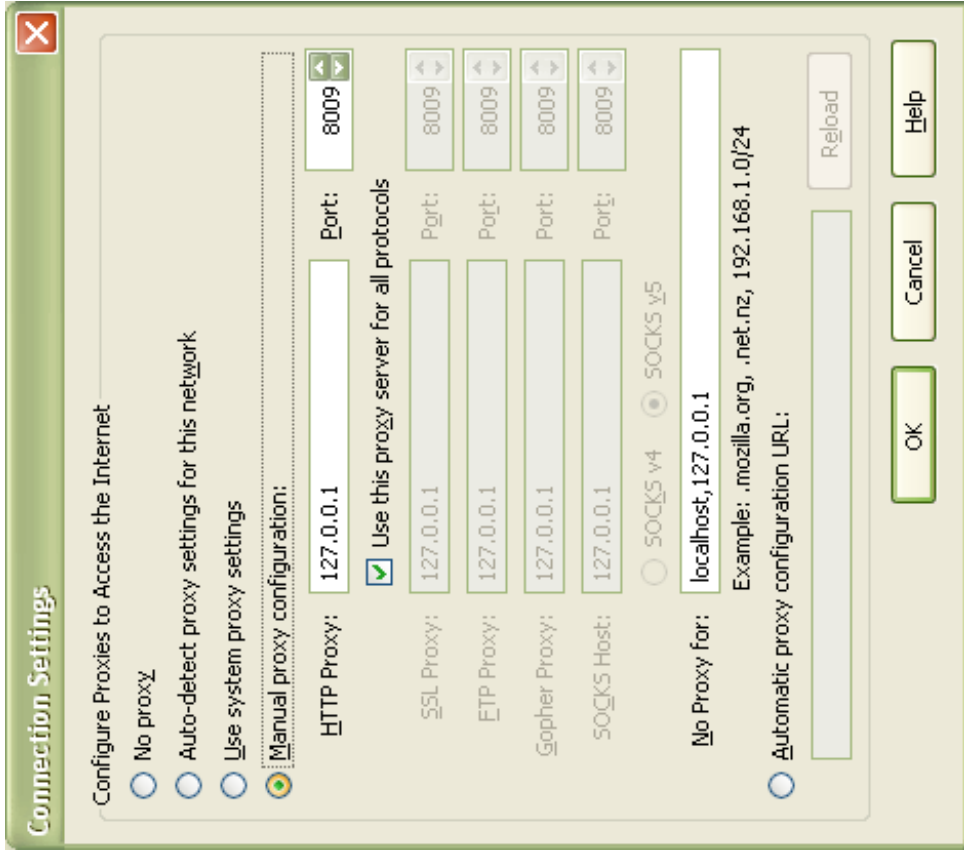
Address Port Base URL Speed Primary?

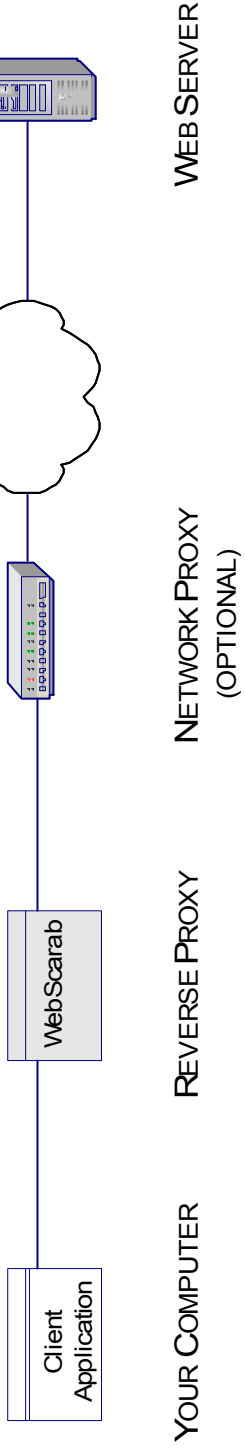
Time ID Method URL Status

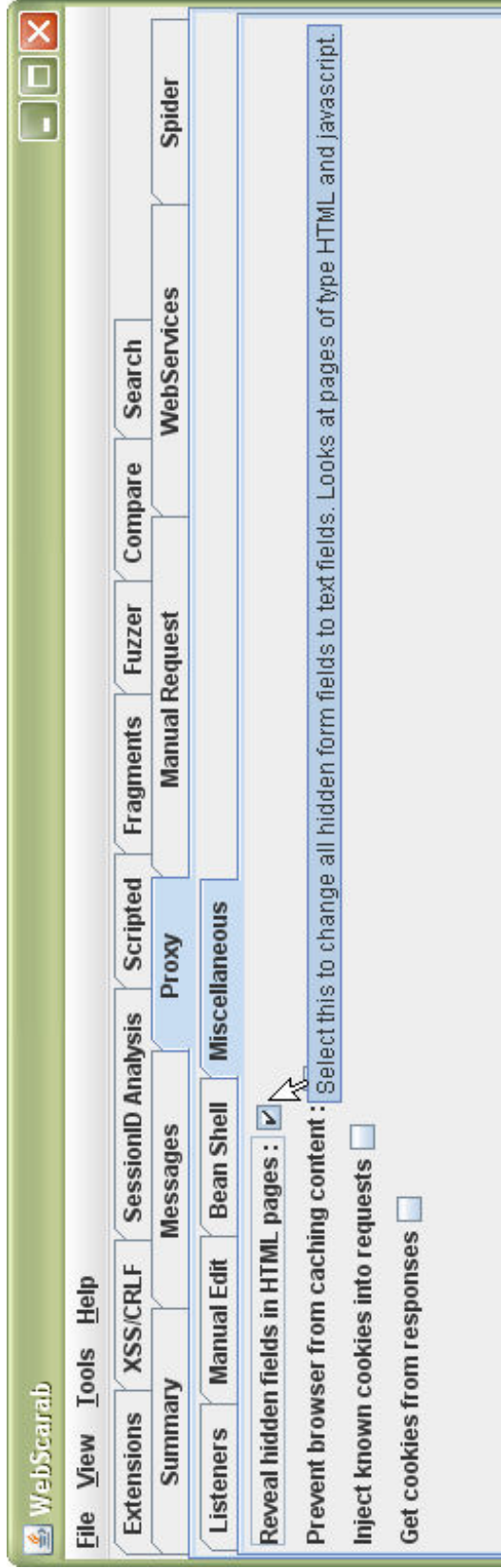
Used 8.92 of 245.56MB

Stop Start

ID	Date	Method	Host	Path	Par
105	2010/04/14 14:54:27	GET	http://widgets.alexa.com:80	/traffic/sparkyl/	?v=1&url=google.co.uk
104	2010/04/14 14:54:26	GET	http://data.alexa.com:80	/data/fvQj91m5WW00oY	?cli=10&ver=spkyf-1.4.9&data=
103	2010/04/14 14:54:26	POST	http://widgets.alexa.com:80	/traffic/rankr/	?ref=http%3A%2F%2Fwww.google.co.uk
102	2010/04/14 14:54:26	GET	http://www.google.co.uk:80	/mapdata	?CwWksRIDHQav-8gEQwLF
101	2010/04/14 14:54:26	GET	http://www.google.co.uk:80	/images/red_icons_A_G.png	
100	2010/04/14 14:54:26	GET	http://www.google.co.uk:80	/search	?q=hot+bars+near+heathrow&
99	2010/04/14 14:54:24	GET	http://widgets.alexa.com:80	/traffic/sparkyl/	?v=1&url=google.com
98	2010/04/14 14:54:24	GET	http://data.alexa.com:80	/data/fvQj91m5WW00oY	?cli=10&ver=spkyf-1.4.9&data=
97	2010/04/14 14:54:23	GET	http://www.google.com:80	/search	?q=hot+bars+near+heathrow&
96	2010/04/14 14:54:22	GET	http://suggestqueries.google.com:80	/complete/search	?output=firefox&client=firefox&
95	2010/04/14 14:54:22	GET	http://suggestqueries.google.com:80	/complete/search	?output=firefox&client=firefox&
94	2010/04/14 14:54:22	GET	http://suggestqueries.google.com:80	/complete/search	?output=firefox&client=firefox&
93	2010/04/14 14:54:21	GET	http://suggestqueries.google.com:80	/complete/search	?output=firefox&client=firefox&
92	2010/04/14 14:54:14	GET	http://widgets.alexa.com:80	/traffic/sparkyl/	?v=1&url=owasp.org
91	2010/04/14 14:54:14	GET	http://www.owasp.org:80	/index.php/Google/google_cu...	
90	2010/04/14 14:54:13	GET	http://ads.owasp.org:80	/www/delivery/ig.php	?bannerid=35&campaignid=2
89	2010/04/14 14:54:13	GET	http://data.alexa.com:80	/data/fvQj91m5WW00oY	?cli=10&ver=spkyf-1.4.9&data=
88	2010/04/14 14:54:15	GET	http://ads.owasp.org:80	/www/delivery/ai.php	?filename=appsec_banner.pr
87	2010/04/14 14:54:13	GET	http://www.owasp.org:80	/index.php/google/google_cu...	
86	2010/04/14 14:54:13	GET	http://www.owasp.org:80	/skins/monobook/logo.gif	
85	2010/04/14 14:54:13	GET	http://www.owasp.org:80	/skins/monobook/user.gif	
84	2010/04/14 14:54:13	GET	http://www.owasp.org:80	/skins/monobook/bullet.gif	
83	2010/04/14 14:54:13	GET	http://ads.owasp.org:80	/www/delivery/aftr.php	?n=a304a461&zzoneid=2&cb=
82	2010/04/14 14:54:13	GET	http://www.owasp.org:80	/skins/common/images/powe...	
81	2010/04/14 14:54:13	GET	http://www.owasp.org:80	/images/f/f4/TEX\Wordmark.jpg	
80	2010/04/14 14:54:13	GET	http://www.owasp.org:80	/images/d/d2/Ucla_cw125.gif	
79	2010/04/14 14:54:13	GET	http://www.owasp.org:80	/images/f/f6/0/Logo_fiuba_baj...	
78	2010/04/14 14:54:12	GET	http://www.owasp.org:80	/images/f/f6/4/Uw-university.gif	









[hidden field name = "hl"]: en
[hidden field name = "client"]: firefox-a
[hidden field name = "hs"]: wd3
[hidden field name = "rls"]: org.mozilla:en-GB:official
[hidden field name = "q"]: hot bars near heathrow

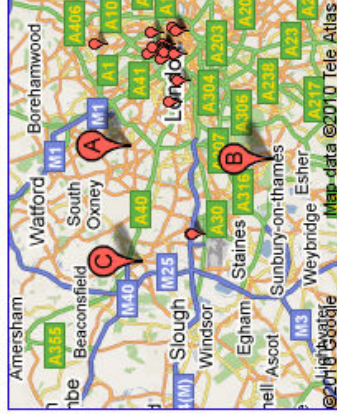
Search: the web pages from the UK

Search

Web [Show options...](#)

Results 1 - 10 of about 596,000 for hot bars near heathrow. (0.31 seconds)

Local business results for hot bars near Heathrow, Hounslow, Middlesex



A [The Green Man Pub and Hotel - thegreenmanhotel.co.uk](#)
Dagmar Avenue, Wembley - 020 8903 1441
★★★★☆ 18 reviews, directions, and more >

B [The Old Kings Head - www.myspace.com](#)
1 Hampton Court Road, Hampton Wick, Surrey - 020 8977 8444
1 review, directions, hours, and more >

C [Mi-Shake - www.mi-shake.com](#)
The Pavilions, 41 The Market Malls, Uxbridge, Hillingdon - 01895 258 825
1 review, directions, hours, and more >
[More results near Heathrow, Hounslow, Middlesex >](#)

Restaurants near Heathrow Airport — Restaurant Guide — Square Meal

6 restaurants within 5km of Heathrow Airport. Results from Square Meal, a guide to London & UK ... Best bars & pubs for alfresco drinking in London ...
[www.squaremeal.co.uk/restaurants/.../Heathrow_Airport - Cached - Similar](#)

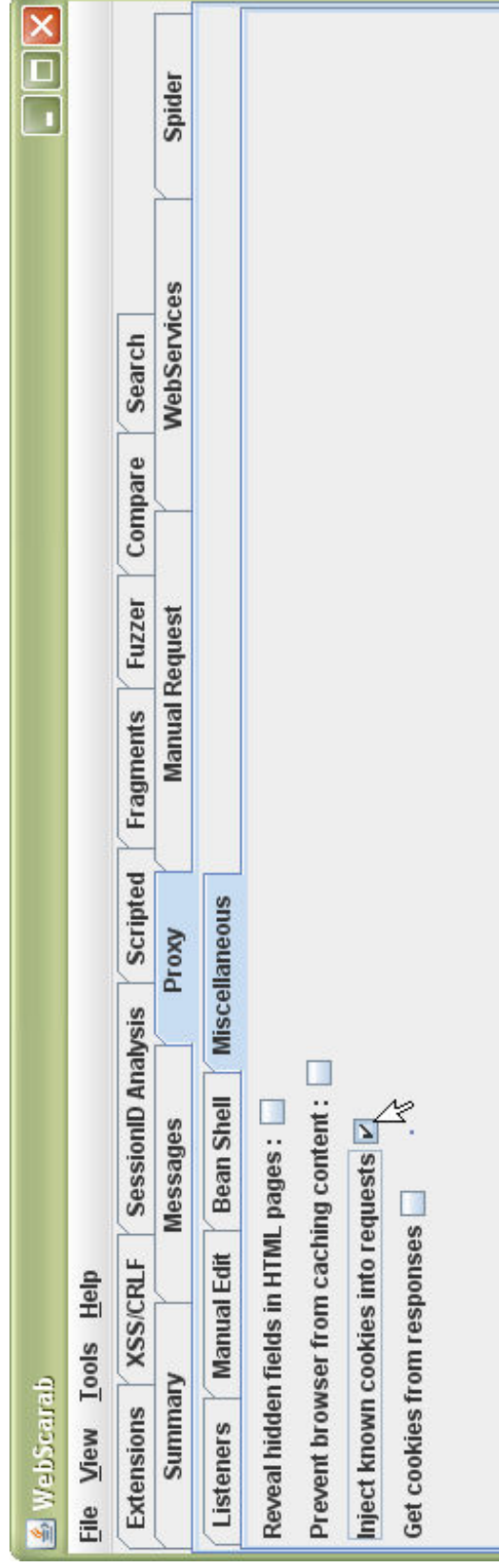
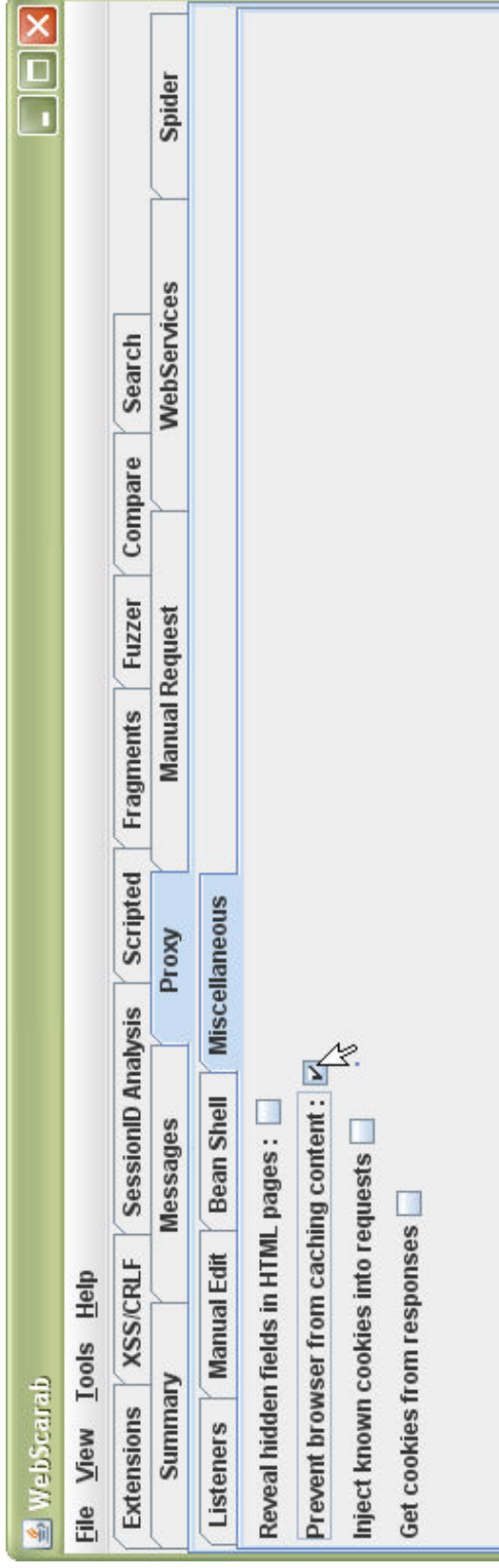
Restaurants near London Heathrow Airport Terminal 3 — Restaurant ...

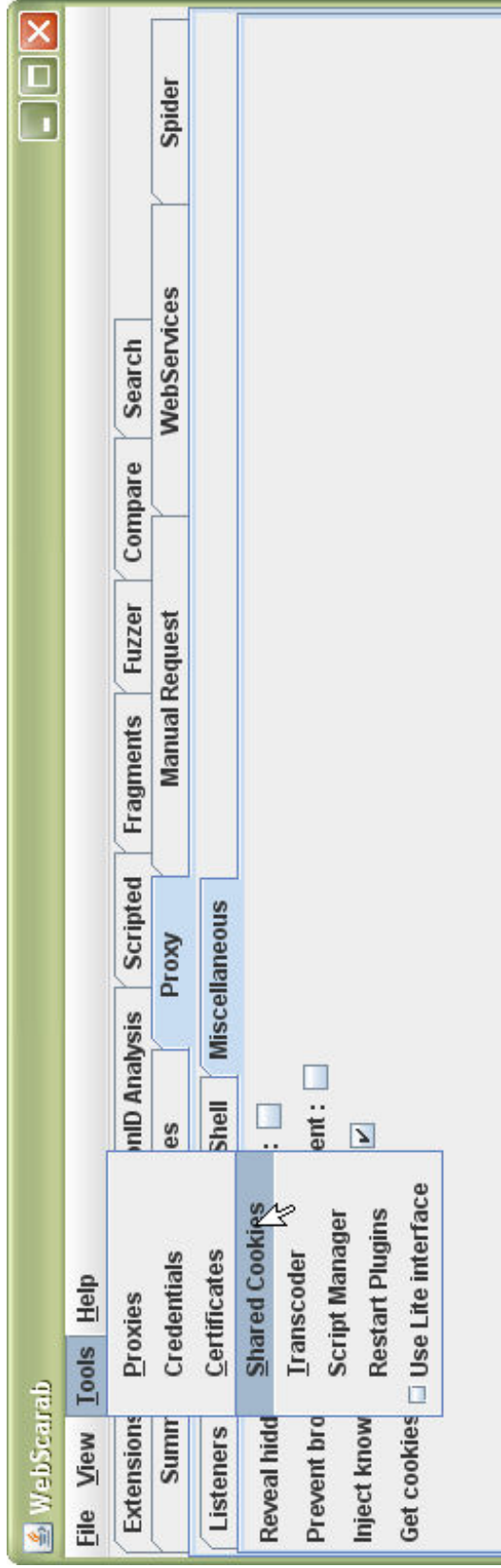
Restaurants near London Heathrow Airport Terminal 3 ... Latest London restaurant & bar openings ... Best bars & pubs for alfresco drinking in London ...
[www.squaremeal.co.uk/.../London_Heathrow_Airport_Terminal_3 - Cached - Similar](#)

London Heathrow Airport Bars and Restaurants - Heathrow Airport Guide

Includes all Heathrow airport's bars, pubs, restaurants and places to eat and ... If you fancy a bite to eat you can pick up a fresh hot or cold snack or ...







WebScarab Cookies

Domain	Path	Name	Date	Value	Secure	Max age	Comment
.alexa.com	/	aid	14-Apr-2010	fQJ91m5WMW00...	<input type="checkbox"/>		
.alexa.com	/	tbver	14-Apr-2010	spkyf-1.4.9	<input type="checkbox"/>		
ads.owasp.org	/	OAID	14-Apr-2010	ae3ce3500d64...	<input type="checkbox"/>		
ads.owasp.org	/	OAVARS[a304a461]	14-Apr-2010	a%3A2%3A%7...	<input type="checkbox"/>		
www.google.co.uk	/search	SS	14-Apr-2010	Q0=aG90IGJhc...	<input type="checkbox"/>		

Previous values

Date	Value	Secure	Max age	Comment

Add Cookie

Domain:

Path:

Name:

Value:

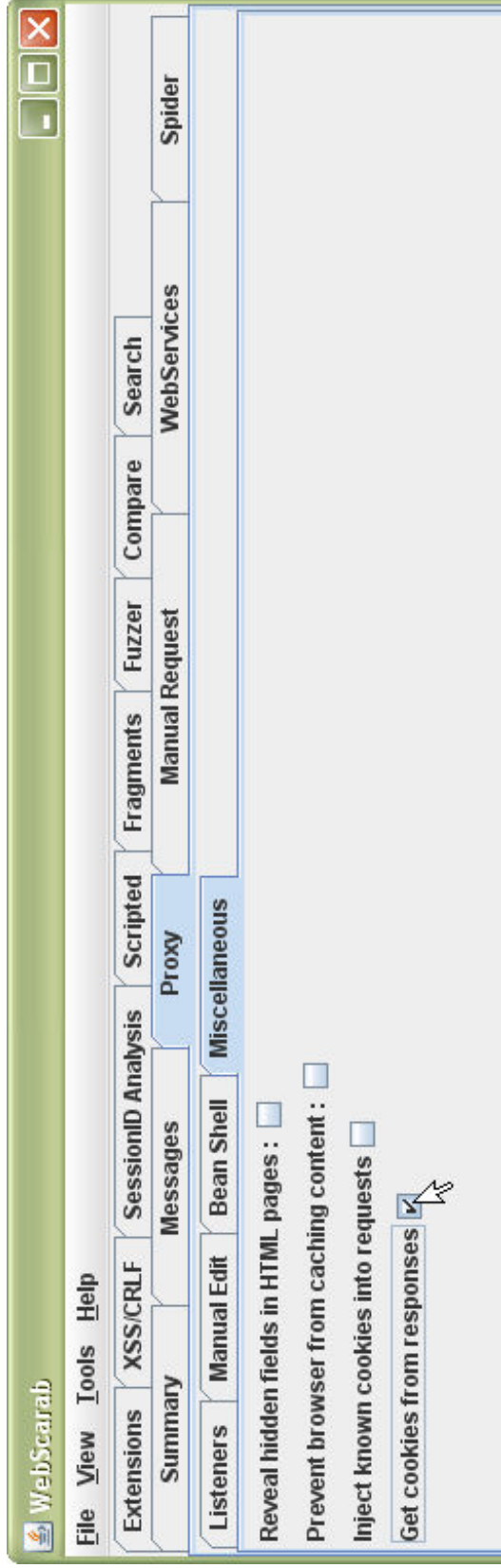
WebScarab Cookies

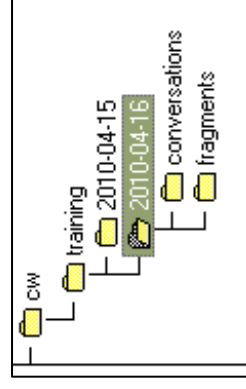
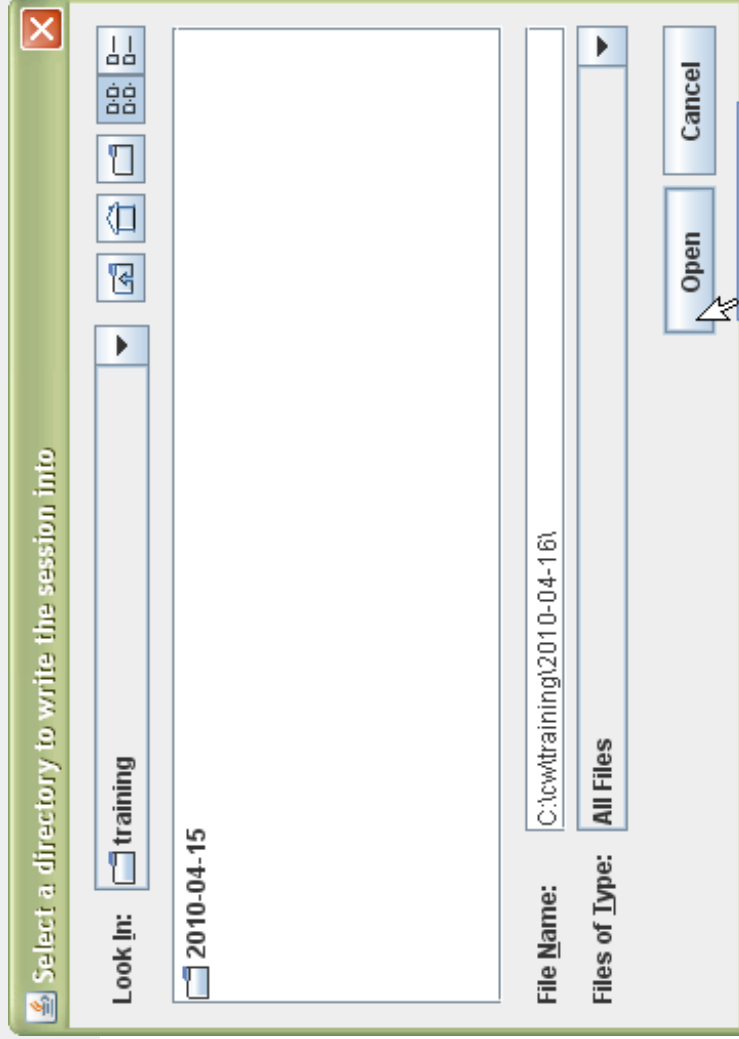
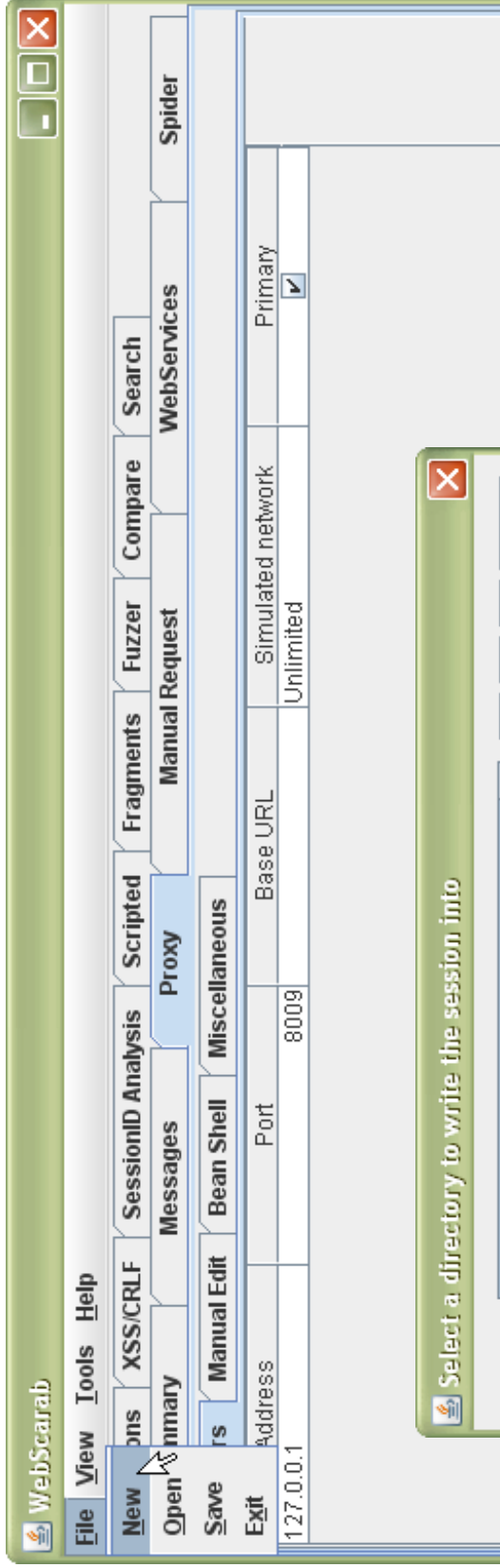
Cookies

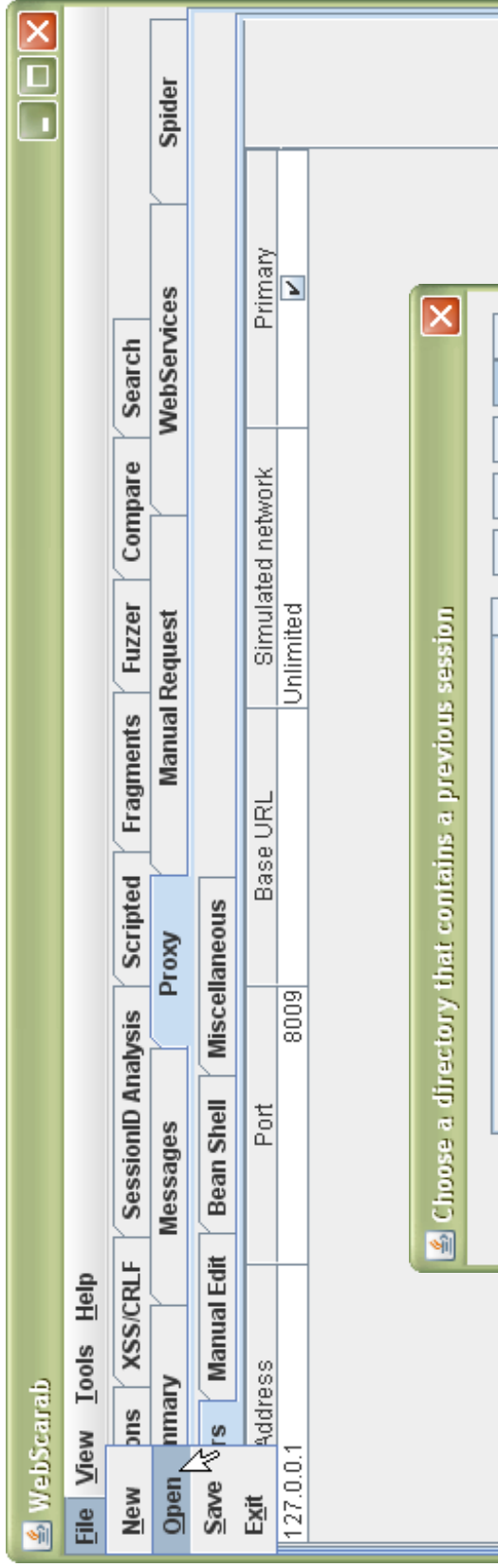
Domain	Path	Name	Date	Value	Secure	Max age	Comment
.google.co.uk	/	PREF	14-Apr-2010	ID=c11b1c047c...	<input type="checkbox"/>		
.google.com	/	NID	14-Apr-2010	33=CEQOfmBR...	<input type="checkbox"/>		
.google.com	/	PREF	14-Apr-2010	ID=1a6492032...	<input type="checkbox"/>		
ads.owasp.org	/	OAID	14-Apr-2010	ae3ce3500d64...	<input type="checkbox"/>		
ads.owasp.org	/	OAVARS[a304a461]	14-Apr-2010	a%3A2%3A%7...	<input type="checkbox"/>		
www.google.co.uk	/search	SS	14-Apr-2010	Q0=aWYtbW9k...	<input type="checkbox"/>		
www.google.com	/accounts	GALX	14-Apr-2010	qKHrnfhtYlQ	<input checked="" type="checkbox"/>		
www.google.com	/accounts	GoogleAccountsLocale...	14-Apr-2010	en	<input checked="" type="checkbox"/>		

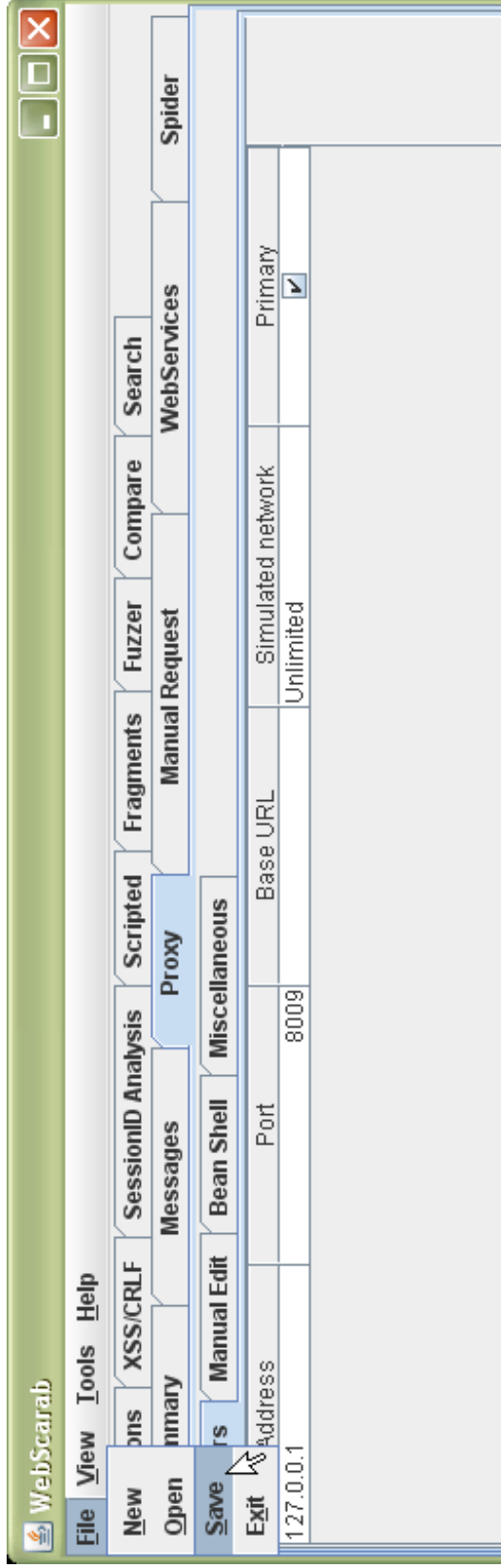
Previous values

Date	Value	Secure	Max age	Comment
14-Apr-2010	Q0=aG90IGJhcnMgbmVhciBoZWFOaHJvdw	<input type="checkbox"/>		
14-Apr-2010	Q0=aG90IGJhcnMgbmVhciBoZWFOaHJvdw	<input type="checkbox"/>		
14-Apr-2010	Q0=aG90IGJhcnMgbmVhciBoZWFOaHJvdw	<input type="checkbox"/>		
14-Apr-2010	Q0=aWYtbW9kaWZpZWQtc2luY2UgaGVhZGVyew	<input type="checkbox"/>		
14-Apr-2010	Q0=aWYtbW9kaWZpZWQtc2luY2UgaGVhZGVyew	<input type="checkbox"/>		











WebScarab

File View Tools Help

Extensions XSS/CRLF SessionID Analysis Scripted Proxy Fragments Fuzzer Compare Search WebServices Spider

Summary Messages Manual Request WebServices

Tree Selection filters conversation list

URL	Methods	Status	Possible Inj...	Injection	Set-Cookie	Comments
http://ads.owasp.org:80/	GET	301 Moved ...	<input type="checkbox"/>	<input type="checkbox"/>	<input type="checkbox"/>	
http://data.alex...	GET		<input type="checkbox"/>	<input type="checkbox"/>	<input type="checkbox"/>	
http://widgets.alex...	GET		<input type="checkbox"/>	<input type="checkbox"/>	<input type="checkbox"/>	
http://www.owasp.org:80/	GET		<input type="checkbox"/>	<input type="checkbox"/>	<input type="checkbox"/>	

ID	Date	Method	Host	Path	Par
17	2010/04/15...	GET	http://data.alex...	/data/oAR191mB9u00MO	?cli=
16	2010/04/15...	GET	http://ads.owasp.org:80	/www/delivery/ai.php	?file
15	2010/04/15...	GET	http://ads.owasp.org:80	/www/delivery/tg.php	?bar
14	2010/04/15...	GET	http://www.owasp.org:80	/skins/monobook/bullet.gif	?h=
13	2010/04/15...	GET	http://ads.owasp.org:80	/www/delivery/aftr.php	
12	2010/04/15...	GET	http://ads.owasp.org:80	/www/delivery/ag.php	
11	2010/04/15...	GET	http://www.owasp.org:80	/extensions/HeaderTabs/skins/headertabs.js	
10	2010/04/15...	GET	http://www.owasp.org:80	/skins/common/ajax.js	?20:
9	2010/04/15...	GET	http://www.owasp.org:80	/index.php	?title
8	2010/04/15...	GET	http://www.owasp.org:80	/skins/common/wikibits.js	?20:
7	2010/04/15...	GET	http://www.owasp.org:80	/favicon.ico	
6	2010/04/15...	GET	http://www.owasp.org:80	/skins/monobook/handheld.css	?20:
5	2010/04/15...	GET	http://www.owasp.org:80	/skins/common/commonPrint.css	?20:
4	2010/04/15...	GET	http://www.owasp.org:80	/skins/monobook/main.css	?20:
3	2010/04/15...	GET	http://www.owasp.org:80	/extensions/HeaderTabs/skins/headertabs.css	
2	2010/04/15...	GET	http://www.owasp.org:80	/index.php/Main_Page	
1	2010/04/15...	GET	http://www.owasp.org:80	/	

Used 7.73 of 247.5MB

WebScarab

File View Tools Help

Extensions XSS/CRLF SessionID Analysis Scripted Proxy Manual Request Fragments Fuzzer Compare Search WebServices Spider

Summary Messages

Tree Selection filters conversation list

Url	Methods	Status	Possible Inj...	Injection	Set-Cookie	Comments
http://ads.owasp.org:80/	GET	301 Moved ...	<input type="checkbox"/>	<input type="checkbox"/>	<input type="checkbox"/>	
http://data.alexacom:80/	GET		<input type="checkbox"/>	<input type="checkbox"/>	<input type="checkbox"/>	
http://widgets.alexacom:80/	GET		<input type="checkbox"/>	<input type="checkbox"/>	<input type="checkbox"/>	
http://www.owasp.org:80/	GET		<input type="checkbox"/>	<input type="checkbox"/>	<input type="checkbox"/>	

ID	Date	Method	Host	Path	Par
89	2010/04/15...	GET	http://www.owasp.org:80	/index.php/Google/google_custom_search_waterma...	
88	2010/04/15...	GET	http://www.owasp.org:80	/skins/common/images/poweredby_mediawiki_88x3...	
87	2010/04/15...	GET	http://www.owasp.org:80	/index.php/google/google_custom_search_watermar...	
86	2010/04/15...	GET	http://www.owasp.org:80	/skins/monobook/logo.gif	
85	2010/04/15...	GET	http://www.owasp.org:80	/skins/monobook/user.gif	
84	2010/04/15...	GET	http://www.owasp.org:80	/images/ff4/TEX/Wordmark.jpg	
83	2010/04/15...	GET	http://www.owasp.org:80	/images/d/d2/Ucla_cw125.gif	
82	2010/04/15...	GET	http://www.owasp.org:80	/images/6/60/Logo_fiuba_baja.gif	
81	2010/04/15...	GET	http://www.owasp.org:80	/images/6/64/Uw-university.gif	
80	2010/04/15...	GET	http://www.owasp.org:80	/images/1/1e/Poly-nyu-logo.jpg	
79	2010/04/15...	GET	http://www.owasp.org:80	/images/a/aa/Gw_stack_black.gif	
78	2010/04/15...	GET	http://www.owasp.org:80	/images/5/55/UNT.gif	
77	2010/04/15...	GET	http://www.owasp.org:80	/images/1/16/Northumbrialogo.jpg	
76	2010/04/15...	GET	http://www.owasp.org:80	/images/2/28/Nku_main-logo.gif	
75	2010/04/15...	GET	http://www.owasp.org:80	/images/c/c/Ucivine_07_bluhex_sm3.jpg	
74	2010/04/15...	GET	http://www.owasp.org:80	/images/d/d9/UT-Logo-for-OWASP.jpg	
73	2010/04/15...	GET	http://www.owasp.org:80	/images/c/c/1/Logo_ISEP_pour_le_Web.jpg	

Used 7.89 of 247.5MB



WebScarab - conversation 1

Previous Next 1 - GET http://www.owasp.org:80/ 301 Moved Permanently

Parsed Raw

Method URL
GET http://www.owasp.org:80/ Version HTTP/1.1

Header	Value
Host	www.owasp.org
User-Agent	Mozilla/5.0 (Windows; U; Windows NT 5.1; e...
Accept	text/html,application/xhtml+xml,application/x...
Accept-Language	en-gb,en;q=0.5
Accept-Encoding	gzip,deflate
Accept-Charset	ISO-8859-1,utf-8;q=0.7,*;q=0.7
Keep-Alive	115
Proxy-Connection	keep-alive

Hex

Position 0 1 2 3 4 5 6 7 8 9 A B C D E F String

Parsed Raw

Version Status Message
HTTP/1.1 301 Moved Permanently

Header	Value
Date	Thu, 15 Apr 2010 08:52:21 GMT
Server	Apache/2.2.14 (Fedora)
Vary	Accept-Encoding, Cookie
X-Vary-Options	Accept-Encoding,list-contains=gzip, Cookie;...
Expires	Thu, 01 Jan 1970 00:00:00 GMT
Cache-Control	private, must-revalidate, max-age=0
Last-Modified	Thu, 15 Apr 2010 08:52:21 GMT
Location	http://www.owasp.org/index.php/Main_Page
Content-Encoding	gzip
Content-length	21
Connection	close
Content-Type	text/html; charset=utf-8

HTML XML Text Hex



The screenshot displays the WebScarab interface with two panes. The top pane shows a GET request to `http://www.owasp.org:80/ HTTP/1.1`. The bottom pane shows the corresponding HTTP response, which is a 301 Moved Permanently status code.

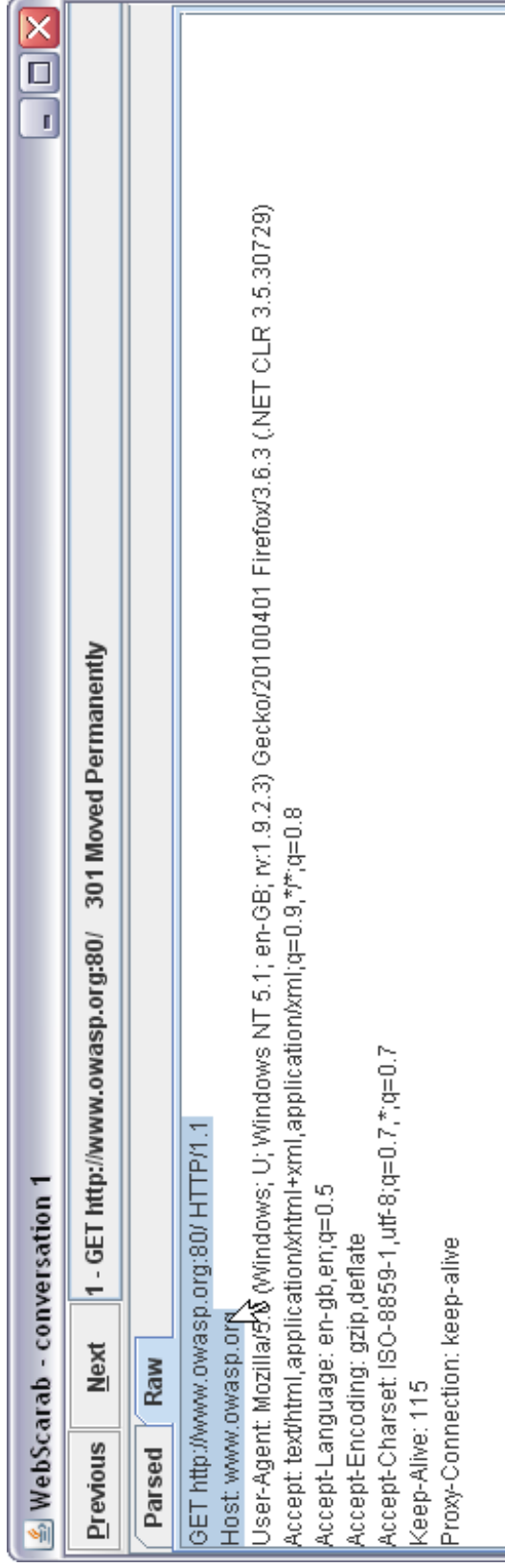
Request:

```
GET http://www.owasp.org:80/ HTTP/1.1
Host: www.owasp.org
User-Agent: Mozilla/5.0 (Windows; U; Windows NT 5.1; en-GB; rv:1.9.2.3) Gecko/20100401 Firefox/3.6.3 (NET CLR 3.5.30729)
Accept: text/html,application/xhtml+xml,application/xml;q=0.9,*/*;q=0.8
Accept-Language: en-gb,en;q=0.5
Accept-Encoding: gzip,deflate
Accept-Charset: ISO-8859-1,utf-8;q=0.7,*;q=0.7
Keep-Alive: 115
Proxy-Connection: keep-alive
```

Response:

```
HTTP/1.1 301 Moved Permanently
Date: Thu, 15 Apr 2010 08:52:21 GMT
Server: Apache/2.2.14 (Fedora)
Vary: Accept-Encoding, Cookie
X-Vary-Options: Accept-Encoding,list-contains=gzip,string-contains=wiki15Token,string-contains=wiki15LoggedOut,string-contains=wiki15LoggedOut
Expires: Thu, 01 Jan 1970 00:00:00 GMT
Cache-Control: private, must-revalidate, max-age=0
Last-Modified: Thu, 15 Apr 2010 08:52:21 GMT
Location: http://www.owasp.org/index.php/Main_Page
X-Content-Encoding: gzip
Content-length: 21
Connection: close
Content-Type: text/html; charset=utf-8
```





WebScarab File View Tools Help

Extensions XSS/CRLF SessionID Analysis Scripted Fragments Fuzzer Compare Search WebServices Spider

Summary Messages Proxy Manual Request

Previous Requests :

Request

Parsed **Raw**

Method URL

GET HTTP/1.0

Header Value **Insert** **Delete**

Hex

Position	0	1	2	3	4	5	6	7	8	9	A	B	C	D	E	F	String
----------	---	---	---	---	---	---	---	---	---	---	---	---	---	---	---	---	--------

Response

Parsed **Raw**

Version **Status** **Message**

Header Value

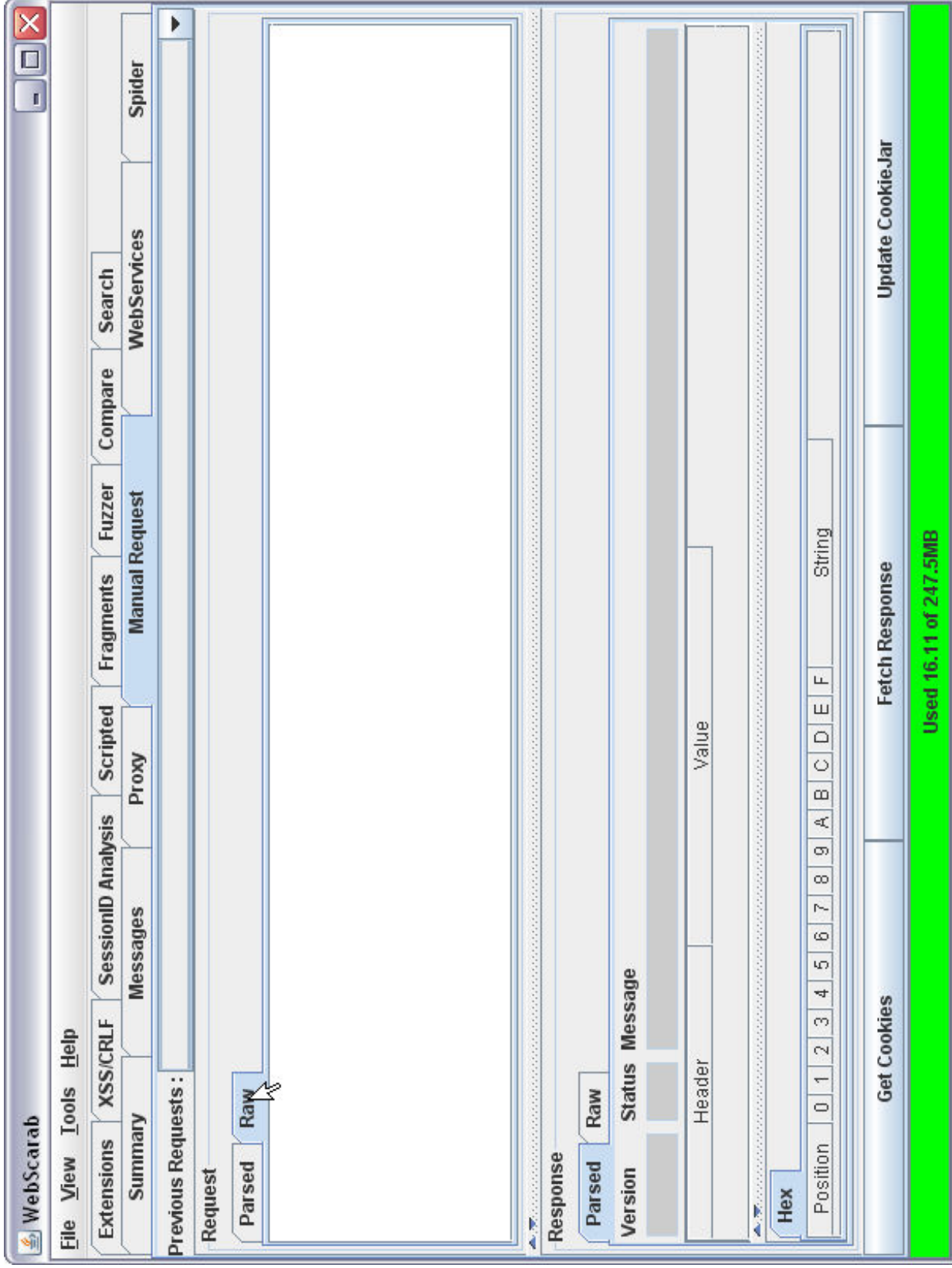
Hex

Position	0	1	2	3	4	5	6	7	8	9	A	B	C	D	E	F	String
----------	---	---	---	---	---	---	---	---	---	---	---	---	---	---	---	---	--------

Get Cookies **Fetch Response** **Update CookieJar**

Used 15.45 of 247.5MB





WebScarab
 File View Tools Help

Extensions XSS/CRLF SessionID Analysis Scripted Fragments Fuzzer Compare Search
 Summary Messages Manual Request WebServices Spider

Previous Requests :

Request
 Parsed Raw
 GET http://www.owasp.org:80/ HTTP/1.1
 Host: www.owasp.org

Response
 Parsed Raw
 Version Status Message
 Header Value
 Hex
 Position 0 1 2 3 4 5 6 7 8 9 A B C D E F String

Get Cookies Fetch Response Update CookieJar
 Used 17.77 of 247.5MB



WebScarab

File View Tools Help

Extensions XSS/CRLF SessionID Analysis Scripted Fragments Fuzzer Compare Search
 Summary Messages Proxy Manual Request WebServices Spider

Previous Requests:

Request

Parsed Raw

```
GET http://www.owasp.org:80/ HTTP/1.1
Host: www.owasp.org
```

Response

Parsed Raw

Status Message

HTTP/1.1 301 Moved Permanently

Header	Value
Date	Thu, 15 Apr 2010 09:36:17 GMT
Server	Apache/2.2.14 (Fedora)
Vary	Accept-Encoding, Cookie
X-Vary-Options	Accept-Encoding;list-contains=gzip,Cookie...
Expires	Thu, 01 Jan 1970 00:00:00 GMT
Cache-Control	private, must-revalidate, max-age=0
Last-Modified	Thu, 15 Apr 2010 09:36:17 GMT
Location	http://www.owasp.org/index.php/Main_Page
Content-length	1
Connection	close

HTML XML Text Hex

Get Cookies Fetch Response Update CookieJar

Used 21.40 of 247.5MB



WebScarab

File View Tools Help

Extensions XSS/CRLF SessionID Analysis Scripted Messages Proxy Scripted Fragments Manual Request Fuzzer Compare Search WebServices Spider

Previous Requests:

Request

Parsed Raw

GET http://www.owasp.org:80/ HTTP/1.1

I

Response

Parsed Raw

Status Message

HTTP/1.1 400 Bad Request

Header	Value
Date	Thu, 15 Apr 2010 09:50:34 GMT
Server	Apache/2.2.14 (Fedora)
Content-length	226
Connection	close
Content-Type	text/html; charset=iso-8859-1

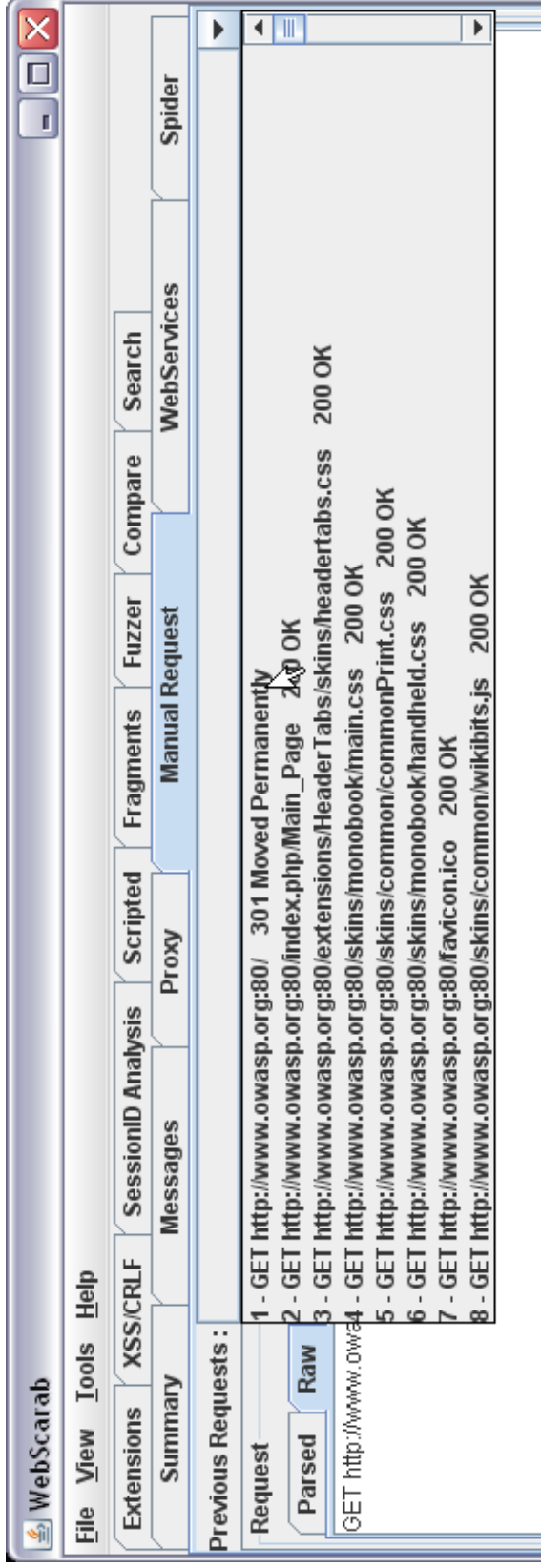
HTML XML Text Hex

Bad Request

Get Cookies Fetch Response Update Cookie-Jar

Used 21.03 of 247.5MB





WebScarab

File View Tools Help

Extensions XSS/CRLF SessionID Analysis Scripted Fragments Fuzzer Compare Search WebServices

Summary Messages Bean Shell Miscellaneous Spider

Listeners Manual Edit Manual Request

Intercept requests: Case Sensitive Regular Expressions ?

Methods

- GET
- POST
- HEAD
- PUT
- DELETE
- TRACE
- PROPFIND
- OPTIONS

Include Paths matching : *

Exclude paths matching : *.gif|.jpg|.png|.css|.js|.ico|.swf|.axd.*)\$

Intercept responses :

Only MIME-Types matching : text/*

Used 30.68 of 247.5MB

Edit Request Intercept requests: Intercept responses:

Parsed **Raw**

```
GET http://www.owasp.org:80/index.php/Category:OWASP_Project HTTP/1.1
Host: www.owasp.org
User-Agent: Mozilla/5.0 (Windows; U; Windows NT 5.1; en-GB; rv:1.9.2.3) Gecko/20100401 Firefox/3.6.3 (.NET CLR 3.5.30729)
Accept: text/html,application/xhtml+xml,application/xml;q=0.9,*/*;q=0.8
Accept-Language: en-gb,en;q=0.5
Accept-Encoding: gzip,deflate
Accept-Charset: ISO-8859-1,utf-8;q=0.7,*;q=0.7
Keep-Alive: 115
Proxy-Connection: keep-alive
Referer: http://www.owasp.org/index.php/Main_Page
```

Accept changes **Cancel changes** **Abort request** **Cancel ALL intercepts**



WebScarab

File View Tools Help

Extensions XSS/CRLF SessionID Analysis Scripted Proxy Manual Request Fuzzer Compare Search Spider

Summary Messages

1 - GET http://www.owasp.org:80/ 301 Moved Permanently

ID	Date	Method	Host	Path	Parameters	Status	Origin	Distance
1	2010/04/15 0...	GET	http://www.o...	/		301 Moved P...	Proxy	0
2	2010/04/15 0...	GET	http://www.o...	/index.php/M...		200 OK	Proxy	4536
3	2010/04/15 0...	GET	http://www.o...	/extensions/...		200 OK	Proxy	667
4	2010/04/15 0...	GET	http://www.o...	/skins/mono...	?207	200 OK	Proxy	5468
5	2010/04/15 0...	GET	http://www.o...	/skins/comm...	?207	200 OK	Proxy	1114

```

<!DOCTYPE html PUBLIC "-//W3C//DTD XHTML 1.0 Transitional
<html xmlns="http://www.w3.org/1999/xhtml" xmlns:v="ut
</head>
<meta http-equiv="Content-Type" c
<meta http-equiv="Content-Style-T
<meta name="generator" content="M
<meta name="keywords" content="Ha
<link rel="stylesheet" type="text
<link rel="stylesheet" type="text
<link rel="stylesheet" type="text
<link rel="stylesheet" type="text
<link rel="search" type="applicat
<link rel="copyright" href="http:
<link rel="alternate" type="appli
<link rel="alternate" type="appli
</title>OWASP</title>
<style type="text/css" media="scr
<link rel="stylesheet" type="text
  
```

Used 46.90 of 247.5MB

End

